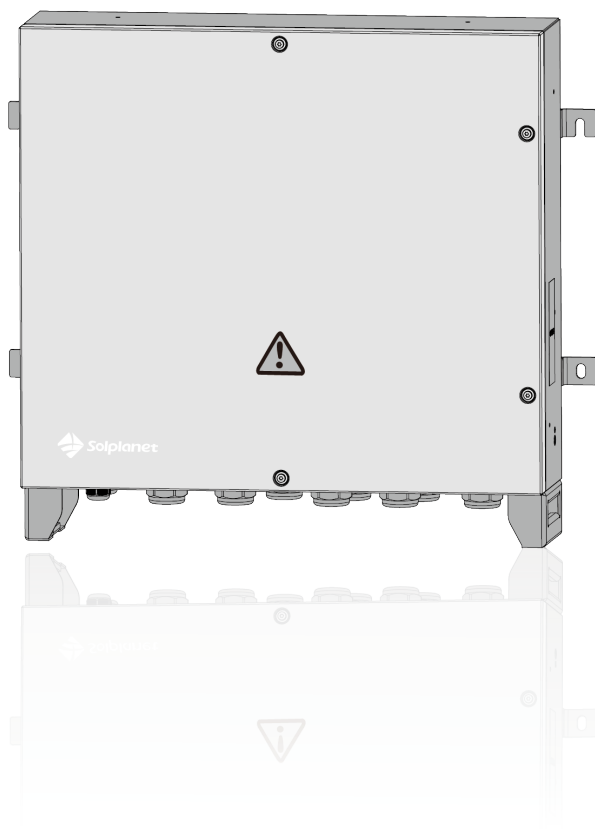


Ai-AMU 2000 (EN)

Quick Installation Guide



1 General Information

This quick installation guide does not replace the description in the user manual. The contents of this guide may be updated or revised due to product development. The information in this guide is subject to change without notice. The latest version of this document and the manual for installation, commissioning, configuration and decommissioning are to be found in PDF format at www.solplanet.net.

2 Safety

2.1 Intended Use

This product is designed and tested strictly in accordance with national standards and industry standards, and there may still be residual risks. To prevent personal injury and property loss and ensure the long-term operation of the product, please read this section carefully and always follow all safety information.

DANGER

Touching the exposed conductor of the power carrier communication (ABUS) may cause a risk of electric shock!

The communication line of the power carrier communication (ABUS) is directly connected to the AC side of the inverter. When the upstream switch is not disconnected, touching the live conductor will cause a fatal risk of electric shock.

- When using the power carrier communication (ABUS) function, this product must be installed in a restricted area.
- When installing the communication line of the power carrier communication (ABUS), the upstream AC circuit breaker must be turned off.
- When the product is operating normally, it is forbidden to touch the communication line and connection terminals of the power carrier (ABUS).

DANGER

Damage to cable lines can cause personal injury!

- The walls may be covered with power cords or other lines (for example, gas or water).
- Make sure that no lines on the wall are damaged when drilling.

NOTICE

Danger to high voltages!

- After the ABUS communication is powered off, it still carries dangerous voltage and cannot be operated immediately. You need to wait at least 30 seconds to allow the supporting capacitor to discharge completely.

NOTICE

Damage to the product due to electrostatic discharge.

Internal components of the product can be irreparably damaged by electrostatic discharge.

- Ground yourself before touching any component .

3 EU Declaration of Conformity

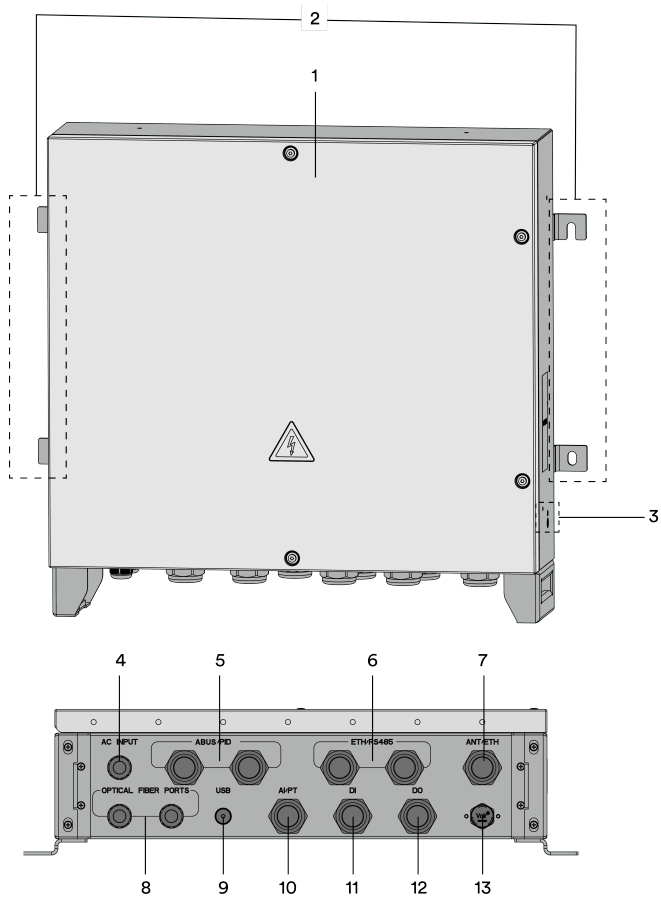
Within the scope of the EU directives

- Radio Equipment Directive 2014/53/EU (L 153/62-106. May 22. 2014) (RED)
- Restriction of the use of certain hazardous substances 2011/65/EU (L 174/88, June 8, 2011) and 2015/863/EU (L 137/10, March 31,2015) (RoHS) AISWEI Technology Co., Ltd. confirms herewith that the product described in this manual are in compliance with the fundamental requirements and other relevant provisions of the above mentioned directives.



The entire EU Declaration of Conformity can be found at www.solplanet.net.

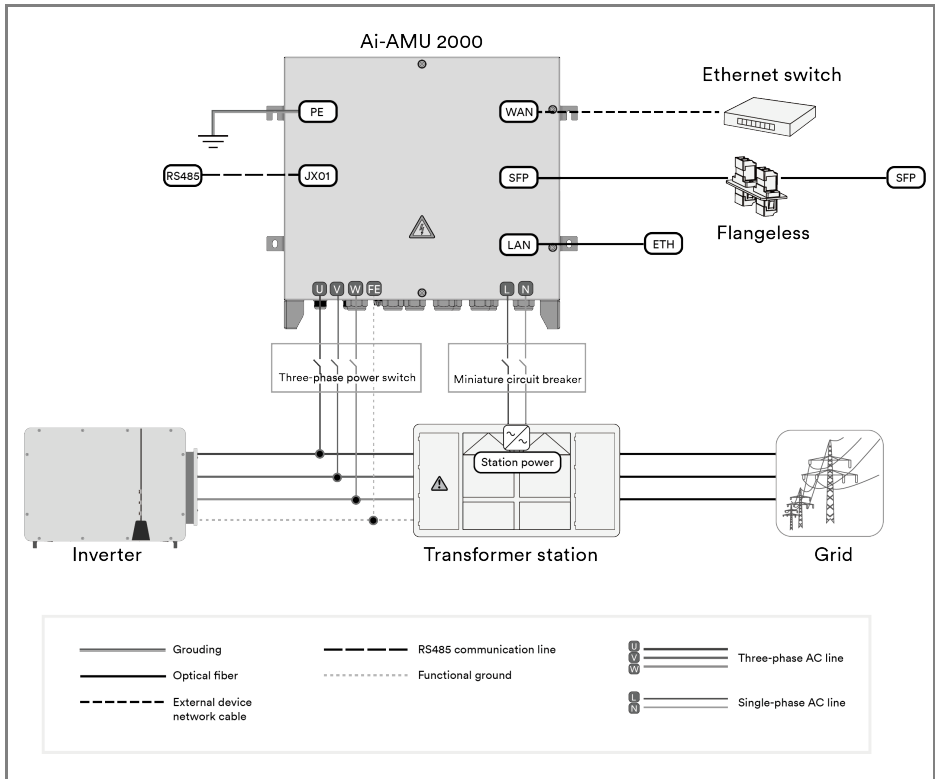
4 Overview



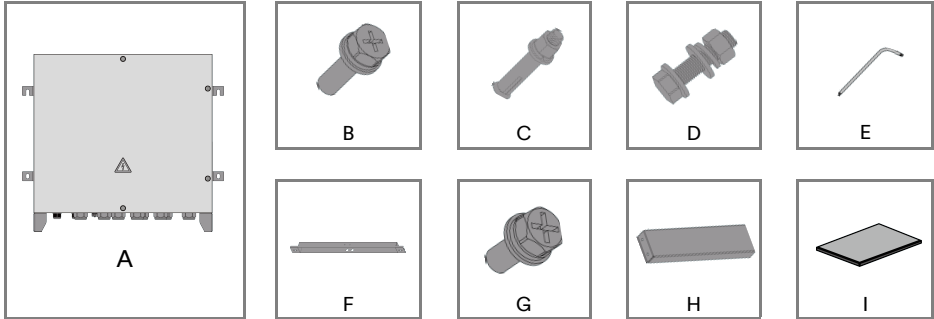
No.	Name
1	Cabinet Door
2	Mounting parts
3	Grounding point of cabinet
4	Single-phase AC port
5	Three-phase ABUS/ PID port
6	Ethernet/ RS485 communication port
7	Antenna/ Ethernet port

8	Optical fiber port
9	USB port
10	AI/PT signal port
11	DI signal port
12	DO signal port
13	Ventilation valve

System Structure:

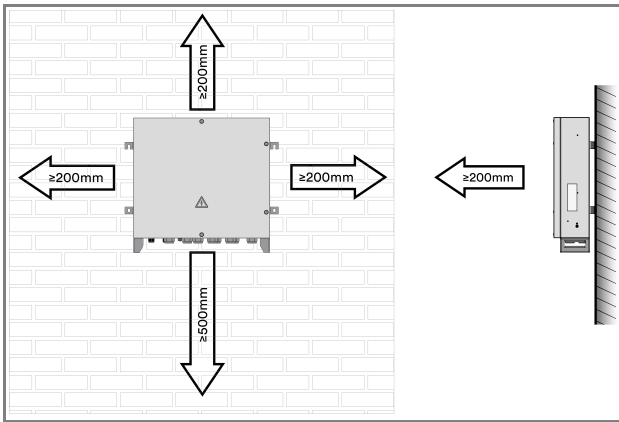
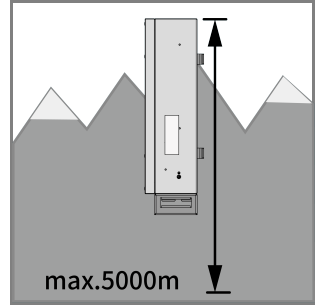
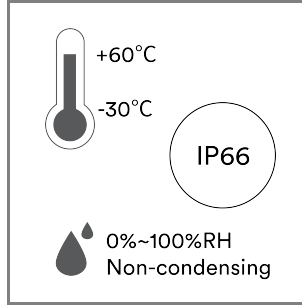
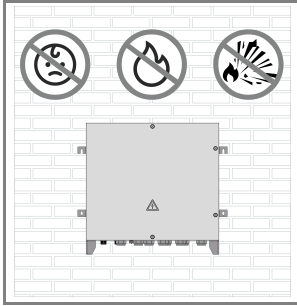


5 Scope of Delivery

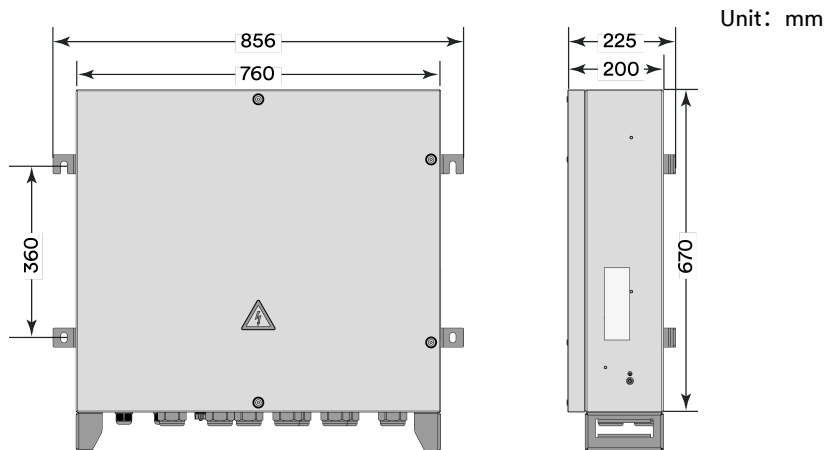


NO.	Name	Quantity
A	Ai-AMU 2000	1
B	M6x16 Screw	2
C	M12 Expansion bolt	4
D	M12 Combination bolt	4
E	Plum spanner	1
F	Hoop mounts	2
G	M5x12 screw	5
H	Hoop Mount Connection Assembly	1
I	Documentation bag	1

6 Mounting Environment

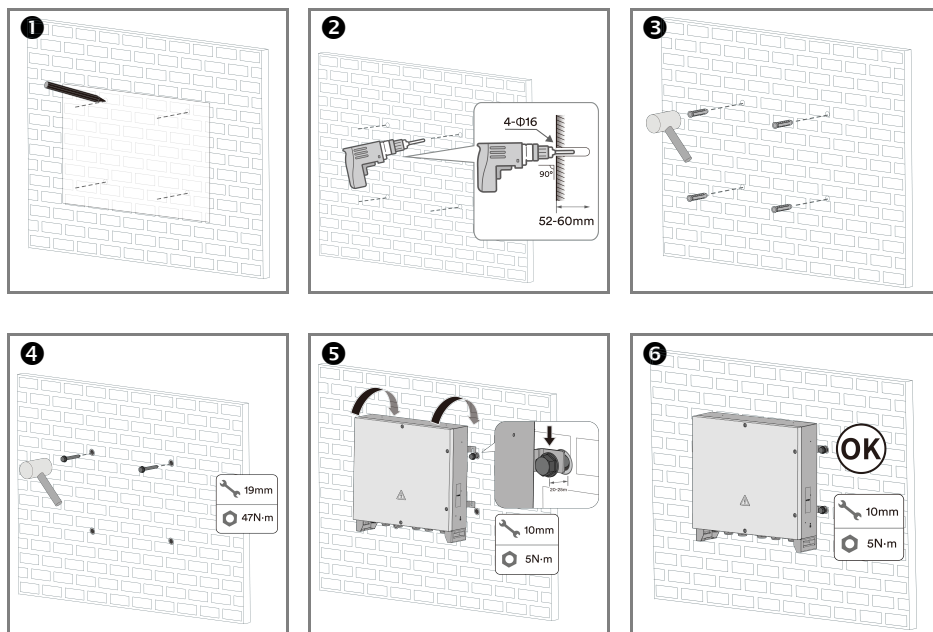


7 Dimensions

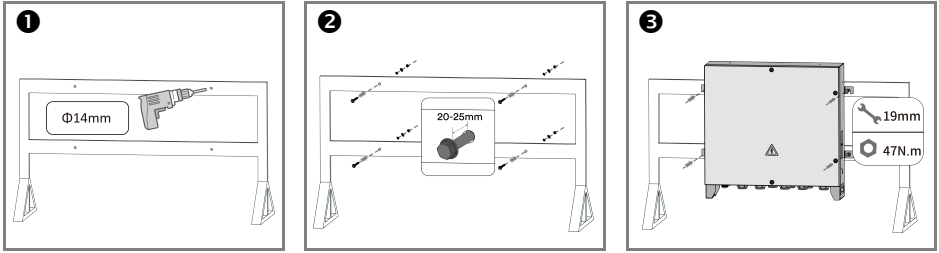


8 Mounting

8.1 Wall Mounting

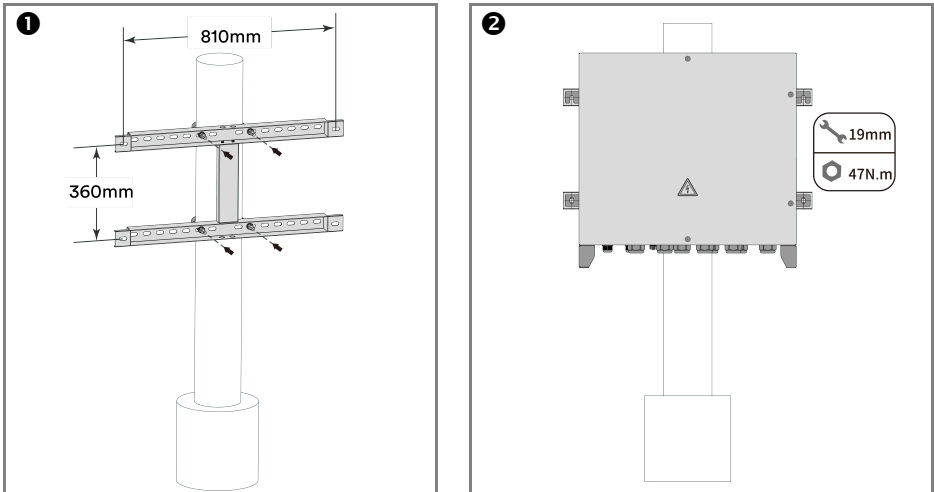


8.2 Bracket Mounting



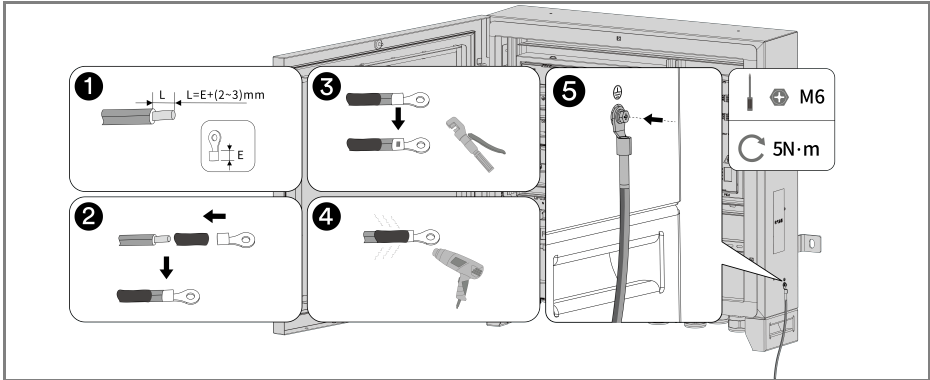
* The bracket needs to be prepared by the customer.

8.3 Hoop Mounting



* The hoop needs to be prepared by the customer.

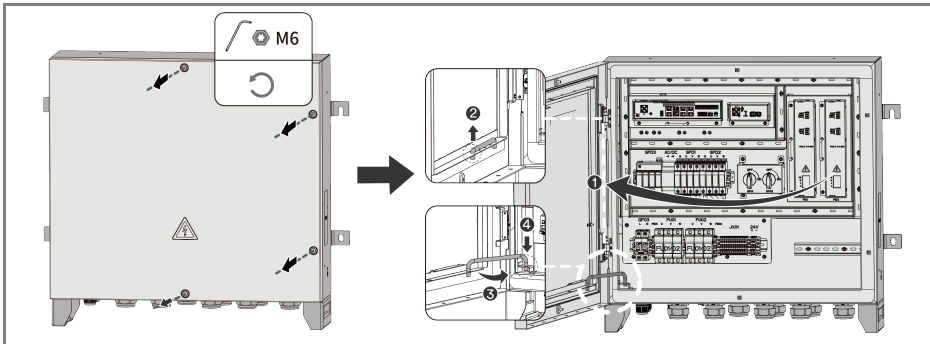
9 Second Protective Grounding



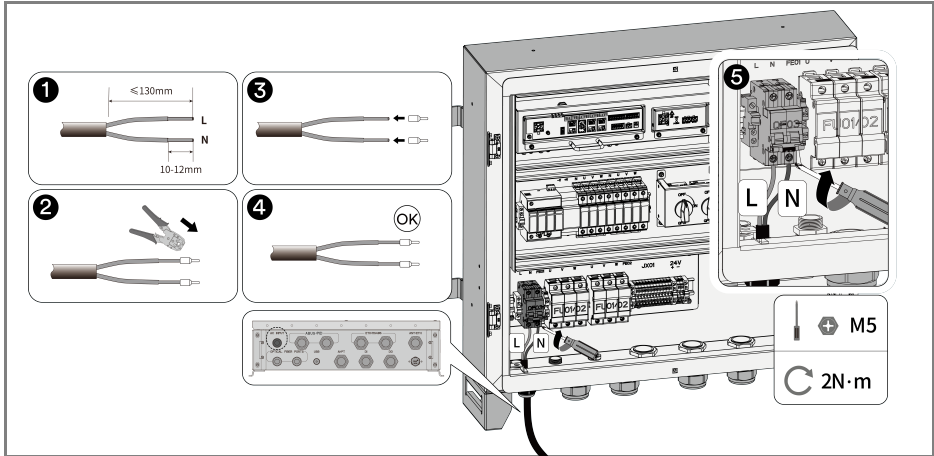
*OT terminals and cables need to be prepared by the customer.

10 Electrical Connection

10.1 Open the Cabinet Door

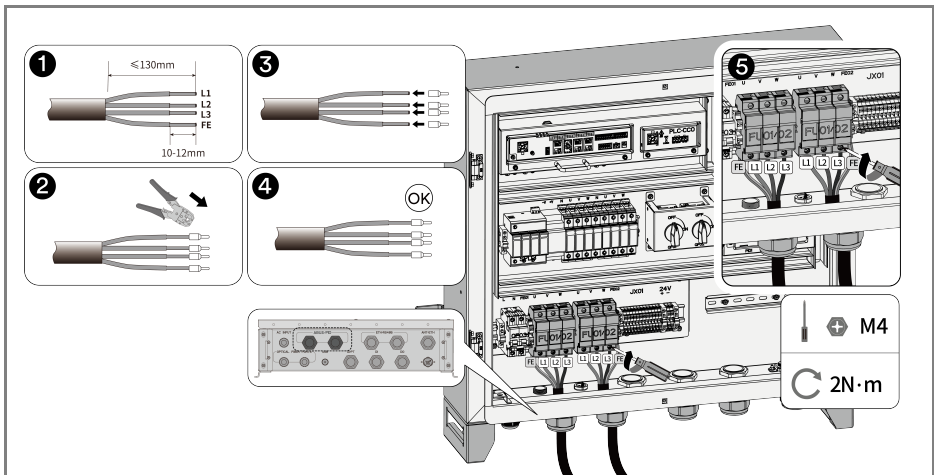


10.2 Connect the Single-Phase Power Cable



*As shown in the figure, after the wires are ready, connect the wires from AC INPUT and the lower end of the single-phase switch. The left side is L and the right side is N (for backup power supply, it is not necessary to connect when using three-phase power supply and there is no special working condition) .

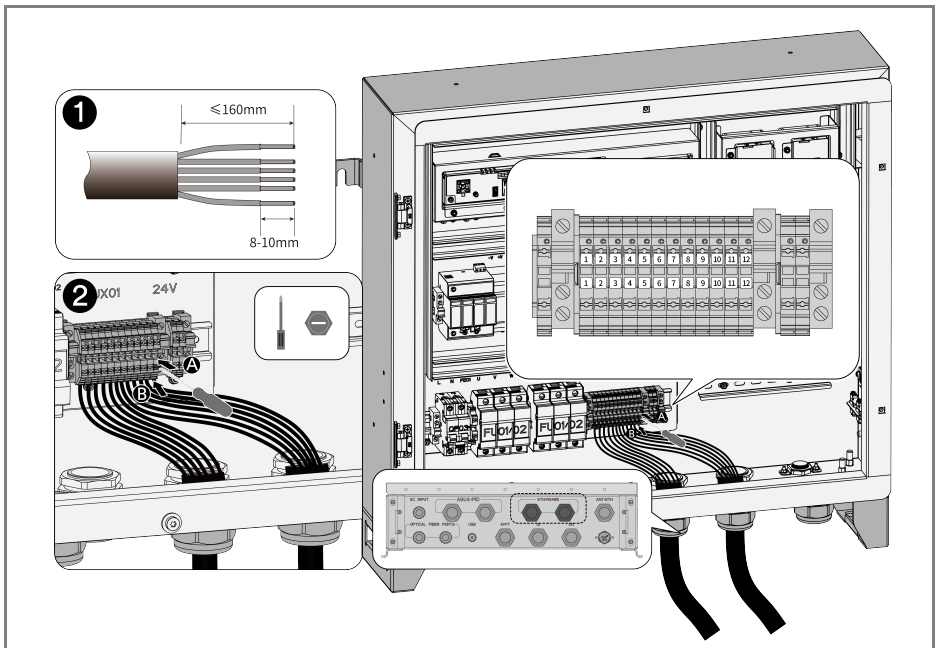
10.3 Connect the Three-Phase Power Cable



* FE01/FE02: Functional grounding wire, which needs to be connected when using the PID suppression function. It is usually connected to the box-type transformer grounding bar. The grounding continuity of the metal bracket on the PV side of the system and the box-type transformer grounding bar must be maintained to ensure the PID suppression effect.

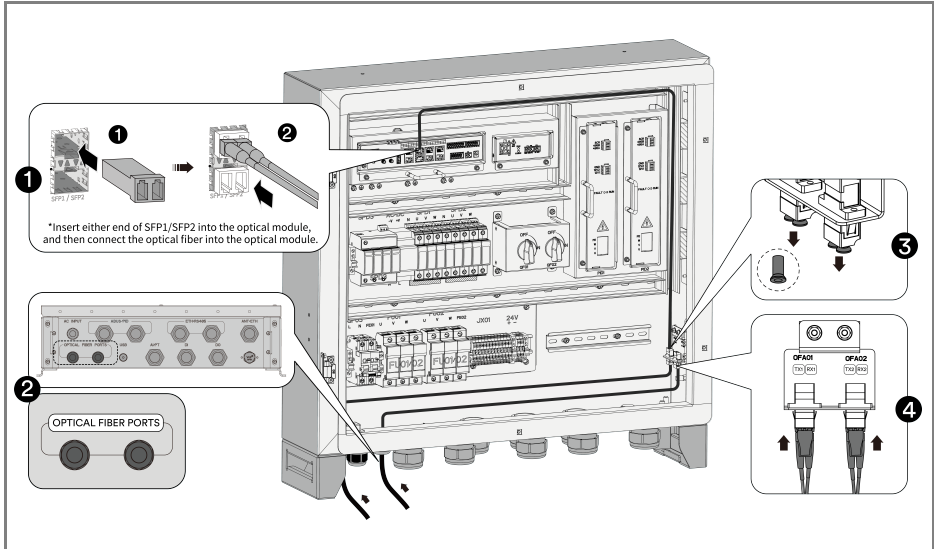
10.4 Connect RS485 Communication Cable

Port	Silkscreen	Definition	Port	Silkscreen	Definition
RS485-1	1	RS485-1A	RS485-4	7	RS485-4A
	2	RS485-1B		8	RS485-4B
RS485-2	3	RS485-2A	RS485-5	9	RS485-5A
	4	RS485-2B		10	RS485-5B
RS485-3	5	RS485-3A	RS485-6	11	RS485-6A
	6	RS485-3B		12	RS485-6B



*As shown in the figure, the line is fed in from ETH/RS485. After the corresponding line is prepared, the operation is as follows: A. Press the terminal block with a small tool B. Insert the line into the corresponding port.

10.5 Connect Optical Fiber



* Optical module needs to be prepared by the customer.

* SFP1 corresponds to TX1/RX1, SFP2 corresponds to TX2/RX2.

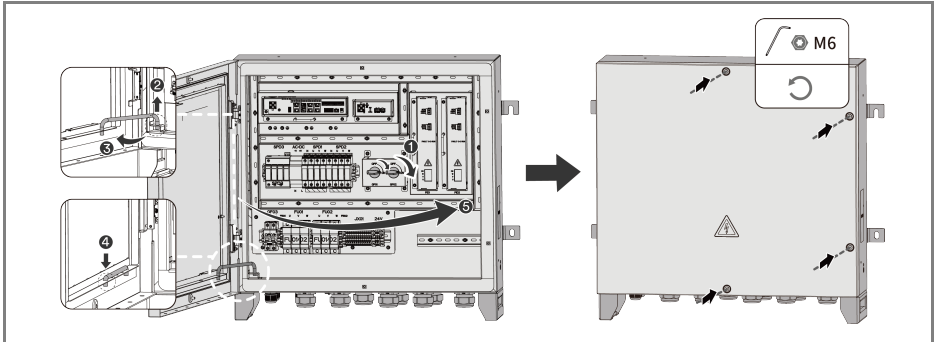


- Optical module is optional, if you configure it by yourself, you can choose 100/1000Mbps optical module according to the docking port of the optical switch, the optical module adopts SFP or eSFP package, the 100Mbps optical module supports the transmission distance of >12km, and the 1000Mbps optical module supports the transmission distance of ≥ 10 km.
- When inserting the optical module into the SFP1 port, please make sure that the label side is facing up; when inserting the optical module into the SFP2 port, please make sure that the label side is facing down.



- To pull out the fibre optic patch cable, press the catch of the cable.
- When pulling out the optical module, pull it outward with the puller. Make sure that the interval between pulling out the optical module is more than 0.2 seconds.

10.6 Close the Cabinet Door



11 App Download

Download and install the Solplanet app by scanning the QR code below.
For details, please refer to the APP user manual.



Android



iOS

12 Contact

Please contact our Service Department if you have any technical questions about our products.

The following information is needed to provide necessary assistance:

- Product serial number
- Fault code
- Installation location
- Warranty card

EMEA

Service email: service.EMEA@solplanet.net

APAC

Service email: service.APAC@solplanet.net

LATAM

Service email: service.LATAM@solplanet.net

Aiswei Greater China

Service email: service.china@aiswei-tech.com

Hotline: +86 400 801 9996

Taiwan

Service email: service.taiwan@aiswei-tech.com

Hotline: +886 809089212

<https://solplanet.net/contact-us>



AISWEI Technology Co., Ltd.
Web: www.solplanet.net
Add.: No. 18, Alley 600, Nanchezhan Road, Huangpu District,
Shanghai, China



PN: 540-300799-01