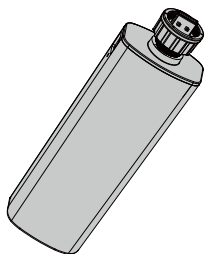


4G CAT1数据采集棒

产品使用说明书



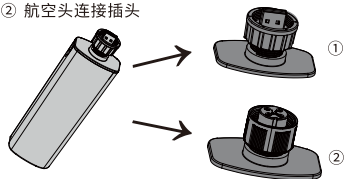
警告:使用前请阅读说明书!

产品介绍

4G CAT1数据采集棒是爱士惟自主研发的智能数据采集设备,负责采集光伏逆变器工作数据,并上传云端。

采集棒按照与逆变器的连接方式,分为两种:

- ① USB 连接插头
- ② 航空头连接插头

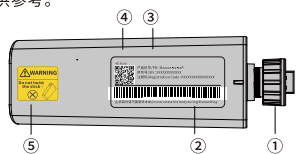


产品特性

- 远程固件升级
- 网络诊断
- LED指示
- 即插即用
- 断点续传
- IP65防护

产品指示

以下图仅做示意,产品标签与警示标签内容与大小仅供参考。



- ① 浮动螺母:连接到逆变器
- ② 产品标签:展示产品信息
- ③ 蓝色LED:网络通讯指示
- ④ 绿色LED:逆变器通讯指示
- ⑤ 警示标签:禁止旋转提示

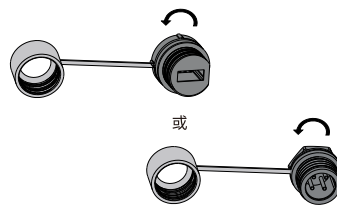
注:LED只有在采集棒上电工作后会点亮显示

包装清单

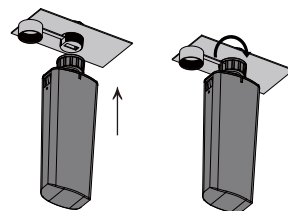
编号	名称	数量
1	数据采集棒	1
2	使用手册	1

安装说明

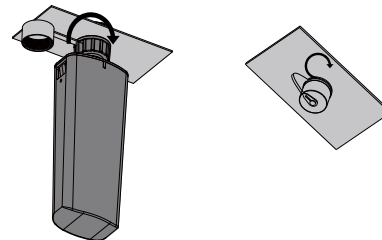
首先逆时针拧掉逆变器上对应的防尘帽。



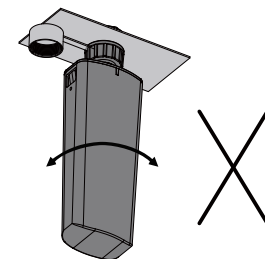
插入数据采集棒,沿顺时针方向拧紧浮动螺母。如下图所示。



拆卸数据采集棒时,请按下图所示**逆时针旋转浮动螺母**,数据采集棒取下后请顺时针拧紧防尘帽,保证逆变器防护。

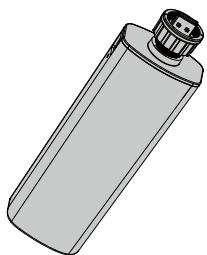


注意:安装或拆卸数据采集棒时,请勿旋转采集棒本体。



4G CAT1

User Manual



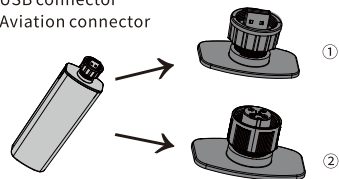
Warning: Please read the instructions before use!

Product Overview

4G CAT1 is a smart data collection device developed by AiSWEI. It is used to collect the operating data of inverters and upload to the cloud.

It has two types depending on how it connects to the inverter:

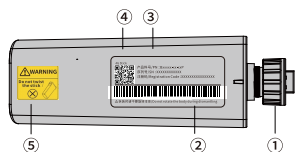
- ① USB connector
- ② Aviation connector



Product features

- Remote firmware update
- Network diagnosis
- LED indicators
- Plug-in and Play
- Automatic resumption of data transmission upon network recovery
- IP65 rated enclosure protection

Product Schema



- ① Rotating screw: Stick connection to the inverter
- ② Product label: shows product information
- ③ Blue LED: Indicator for network communication
- ④ Green LED: Indicator for inverter communication
- ⑤ Warning Label: to prohibit rotation

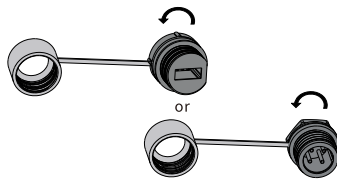
Note: The LED will only light up after the stick is powered on.

Packing List

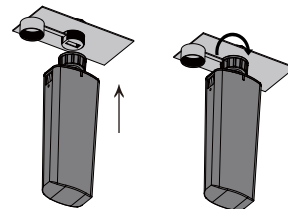
No.	Name	Quatity
1	Stick	1
2	User Manual	1

Installation Guide

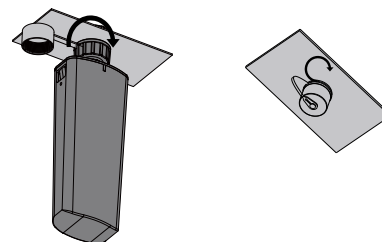
First, unscrew the dust cap on the inverter counterclockwise.



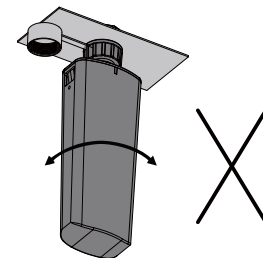
Insert the stick and tighten the floating screw clockwise. As shown below.



To remove the Stick from the inverter, **turn the floating screw counterclockwise** as shown in the figure below. After removing the Stick, tighten the anti-dust cap clockwise to ensure inverter protection.



Caution: Please do not rotate the body of the Stick during installation or removal.



电站监控

App下载

用户可通过扫描如下二维码下载安装AiSWEI App, 然后进行安装。



Android/iOS

微信公众号

关注微信服务公众号获取更多服务。



创建账号及电站

打开AiSWEI App, 点击首页左上方注册账号。注册登陆之后, 点击右上“+”创建电站。具体可参考App操作说明书。

注: 数据采集棒上电之后, 会自动注册基础网络, 无需配置网络。

LED指示及故障排除

绿色LED: 逆变器通讯指示

- 绿色LED灯灭: 数据采集棒数据采集端硬件故障, 请联系售后。
- 绿色LED灯常亮: 数据采集正常。

蓝色LED: 网络通讯指示

- 蓝色LED灯灭: 数据采集棒没有注册到基础网络, 请尝试重新启动或联系售后。
- 蓝色LED灯快速闪烁: 数据采集棒注册到基础网络, 但在拨号中。若长时间处于拨号状态, 则为基站网络异常, 请联系售后。
- 蓝色LED灯慢速闪烁: 数据采集棒正常连接到云端服务器, 但是为2G/3G网络。
- 蓝色LED灯常亮: 数据采集棒连接到云端服务器, 且为LTE/FDD网络。

产品质保

感谢您购买爱士惟科技股份有限公司的数据采集棒, 为了更好的为您服务, 请妥善保管好质保卡。需要使用时, 请认真阅读、填写此质保卡。

客户填写内容:

用户名		联系人	
产品名称		购买日期	
序列号			
联系电话			
用户地址			
订单编号			
维修记录	日期	故障原因及处理	

联系方式

爱士惟科技股份有限公司
服务热线: 400 801 9996
服务邮箱: service.china@aiswei-tech.com
网址: www.aiswei-tech.com
地址: 上海市黄浦区蒙自路757号905B室

合格证

本产品经检验符合出厂标准

Plant Monitoring

App download

Download and install the Solplanet app by scanning the QR code below.



iOS



Android

Account registration and plant creation

Open the Solplanet App and register a new account.
After completing the account registration and logon, click on the “+” icon to create a plant. Please refer to the App user manual for further details.
Note: After the Stick is powered on, the base network will be automatically registered without the need for network configuration.

LED indicators and troubleshooting

Green LED: Inverter communication indicator

- Green LED is off: Stick hardware fault, Please contact our service.
- Green LED is on: Data collection is normal.

Blue LED: Network communication indicator

- Blue LED is off: Stick is not registered to the base network. Try restarting or contacting our service.
- Blue LED blinks quickly: Stick has registered to base network, but is dialing. If dialing for a long time, the base network might be abnormal, please contact our service.
- Blue LED blinks slowly: Stick is properly connected to the cloud server for 2G/3G network.
- Blue LED lights on: Stick is connected to the cloud server for LTE/FDD network.

Warranty

Thank you for purchasing the 4G Stick from AISWEI Technology Co., Ltd. Please keep this warranty card carefully, so that you could enjoy our full-service benefits.

Filled in by the customer:

User name		Contact person	
Product name		Purchase date	
Serial number			
Contact number			
Address			
Order number			
Service information	Date	Description	

Warranty description

Please send the faulty device and warranty card together back to AiSWEI service center in case of quality issues.

Note

1. From the date on the purchasing invoice, any quality issue which happens within warranty period will be fully covered by the warranty.
2. The warranty does not cover damages that occur due to incorrect installation, commission, inappropriate storage and other unreasonable factors.

Contact

EMEA
Service email: service.EMEA@solplanet.net

APAC
Service email: service.APAC@solplanet.net

LATAM
Service email: service.LATAM@solplanet.net

Aiswei Greater China
Service email: service.china@aiswei-tech.com
Hotline: +86 400 801 9996

Taiwan
Service email: service.taiwan@aiswei-tech.com
Hotline: +886 809089212

<https://solplanet.net/contact-us/>

Qualification Certification

This product has passed the factory quality check control