




# Solplanet App **Manual**

# All Rights Reserved

Copyright © AISWEI Technology Co., Ltd. 2024. All rights reserved.

No part of this document may be reproduced or transmitted in any form or by any means without the prior written consent of AISWEI Technology Co., Ltd. .

Trademarks and Permissions

 **Solplanet** and other AISWEI trademarks are trademarks of AISWEI Technology Co., Ltd. .

All other trademarks and trade names mentioned in this document are the property of their respective holders.

## ***Notice***

The information in this document is subject to change without notice. Every effort has been made in the preparation of this document to ensure accuracy of the contents, but all statements, information, and recommendations in this document do not constitute a warranty of any kind, express or implied.

All other trademarks contained in this document are the property of their respective owners and their use herein does not imply sponsorship or endorsement of their products or services.

The unauthorized use of any trademark displayed in this document or on the product is strictly prohibited.

# Table of Contents

---

<b>01</b>	About This Document	1
	1.1 Overview	1
	1.2 Intended Audience	1

---

<b>02</b>	Download “Solplanet” App	1
-----------	--------------------------	---

---

<b>03</b>	Account related	1
	3.1 Create an account	2
	3.2 Forgot password	3
	3.3 Data migration	5

---

<b>04</b>	Create a new plant	7
	4.1 Add dongle, inverter to plant	9
	4.2 Add EV Charger to plant	12

---

<b>05</b>	Setting parameters	14
	5.1 Confirm the connection method	14
	5.1.1 Set by “Network configuration”	14
	5.1.2 Set by “Device hotspot configuration”	16
	5.2 Inverter list	18
	5.2.1 Inverter details	19
	5.2.2 General function settings	19
	5.2.3 Grid code settings	20
	5.2.4 Startup parameter settings	21
	5.2.5 Grid voltage protection settings	22
	5.2.6 Grid frequency protection settings	22

---

5.2.7 Reconnection time settings	23
5.2.8 Other protection settings	24
5.2.9 Active power settings	25
5.2.10 Ramp rate settings	25
5.2.11 Overfrequency response settings	26
5.2.12 Overvoltage response settings	28
5.2.13 Underfrequency loading settings	29
5.2.14 Undervoltage loading settings	31
5.2.15 Reactive power settings	32
5.2.16 Reaction time	33
5.2.17 Power factor settings	34
5.2.18 Cos (P) curve settings	34
5.2.19 Fixed Q setpoint	35
5.2.20 Q(U) curve adjustment	36
5.2.21 Inverter firmware upgrade	37
5.2.22 Energy storage settings	38
5.3 WLAN	40
5.4 Active power limitation setting	41
5.5 Smart dongle	43
5.5.1 Dongle firmware upgrade	44

---

<b>06</b>	EV charger Setting parameters	45
	6.1 My EV Charger Screen	45
	6.2 Scheduled charging	45
	6.2.1 Single charge	45

---

6.2.2	Cyclic charge	46
6.2.3	Off-peak mode	47
6.2.4	Scheduled charging for UK region	49
6.3	Max. allowable charging current configuration	49
6.4	Manually to add meter	51
6.5	Dynamic Load Balancing	52
6.6	Solar Energy Mode	53
6.7	RFID card management	54
6.8	Work mode setting	55
6.9	Firmware update	56
6.9.1	Local firmware upgrade - Bluetooth	56
6.9.2	Remote firmware upgrade - 4G, Wi-Fi, Ethernet	57
6.10	Randomised delay charging	57
6.11	Network configuration	59

---

<b>07</b>	Share Plant	64
-----------	-------------	----

---

<b>08</b>	Troubleshooting	65
-----------	-----------------	----

---

<b>09</b>	Contact us	66
-----------	------------	----

---



# 1

## About This Document

### 1.1 Overview

This document describes the common operations of the Solplanet app.

### 1.2 Intended Audience

This document is intended for:

- Installers
- Users

# 2

## Download “Solplanet” App

You can scan the QR code, download the Solplanet App application.



Android



iOS

Figure 1. QR code for download the Solplanet App application

# 3

## Account related

If you do not have an account, you need to register an account first.

### 3.1 Create an account

Procedure:

**Step1.** Open Solplanet APP, then click “Don’t have an account”.

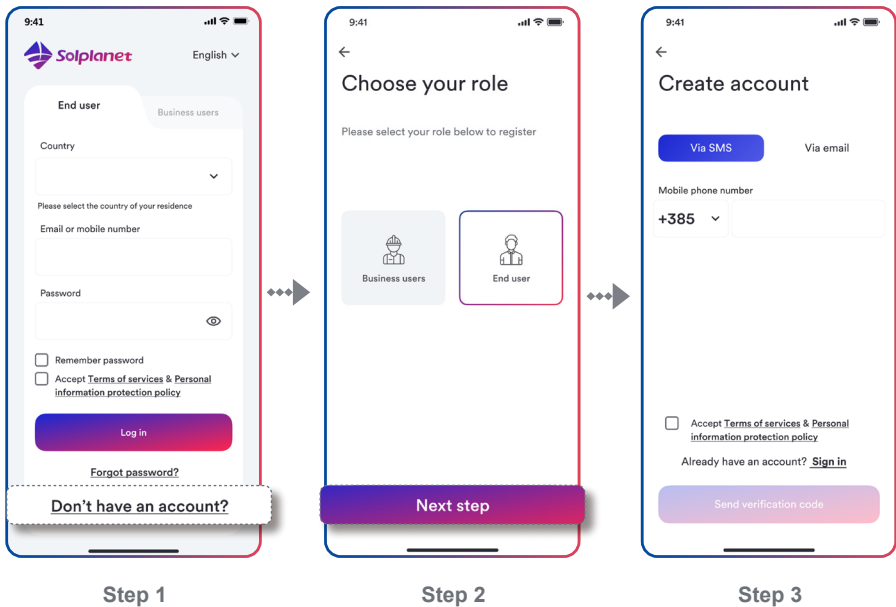
**Step2.** After selecting the identity you want to register (End user/Business users), click “Next step”.

**Step 3.** After selecting your desired registration method (mobile phone/email), enter the correct mobile.

**Step 4.** Correctly enter the verification code received by mobile phone SMS/email.

**Step 5.** Enter the login password you wish to set for this login account, and click “Register”. At this point, the account registration is completed.

For details, please refer to Figure 2.



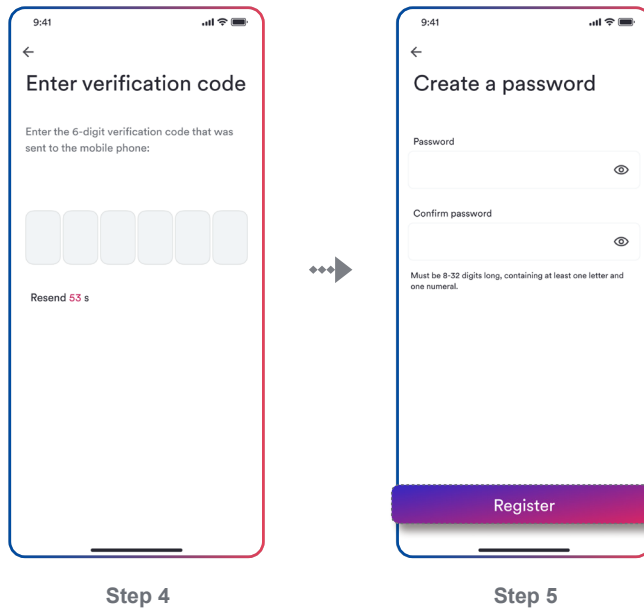


Figure 2. Create an account

### 3.2 Forgot password

**Step 1.** Open Solplanet APP, then click “Forgot password”.

**Step 2.** Via mobile phone is default by system, you may also perform password retrieval via email by switching.

- a. Enter registered mobile phone number or email.
- b. Your mobile phone or email will receive a 6-digit pure digital verification code, and please enter it.
- c. After the verification code is successful, please enter your desired new password(8-32 bits, supports mixed letters and numbers) .
- d. After the reset is successful, you can log in to the app with the new password.

For details, please refer to Figure 3.

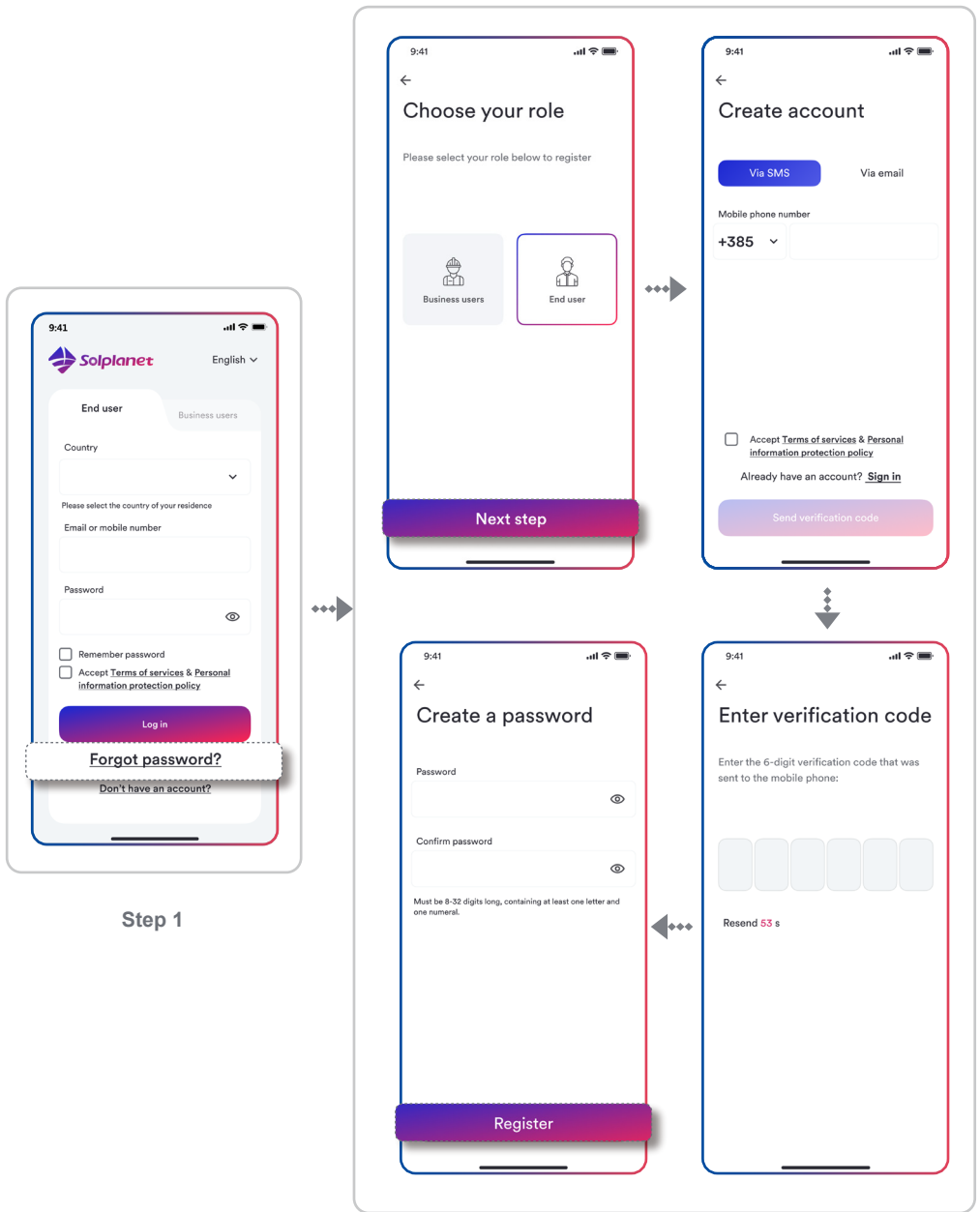


Figure 3. Forgot password

### 3.3 Data migration

- This function is used for upgrading end users in this application to Business users, and migrating all power station information under the end user account to Business users. After the migration is successful, the account of the original end user will not be able to log in again. If you want to be an end user, you need to register again.
- The data migration function can only migrate your own power station, not the shared power station.

**Step 1.** In the login window, switch the login identity to “Business Users”.

**Step 2.** After entering the corresponding information, click “Start Migration” to proceed.

For details, please refer to Figure 4.

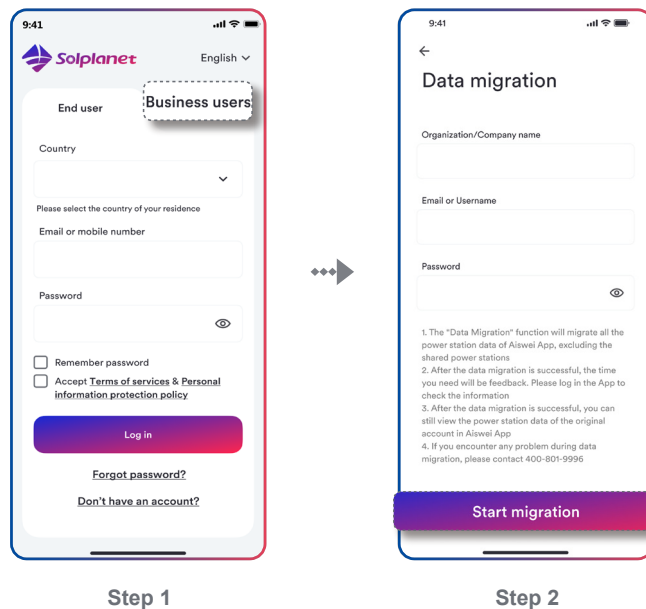


Figure 4. Data migration

- If you have registered an account with Business user identity through the “Solplanet” application, and want to migrate all the power station information in the account with your end user identity. You can migrate data through “Data migration” on the “Me” page (as shown in Figure 5). The operation steps are the same as the data migration on the login page above.

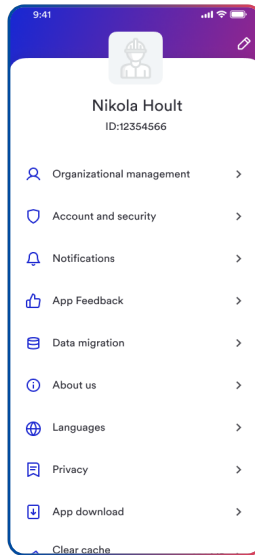


Figure 5. “Me” page

## 4

# Create a new plant

\*Text your account and password, then click “Log in” (if you do not have account, please refer to 3.1 above).

**Step1.** Click on the “+” icon.

**Step2.** Click the “Create or Modify Plant” icon.

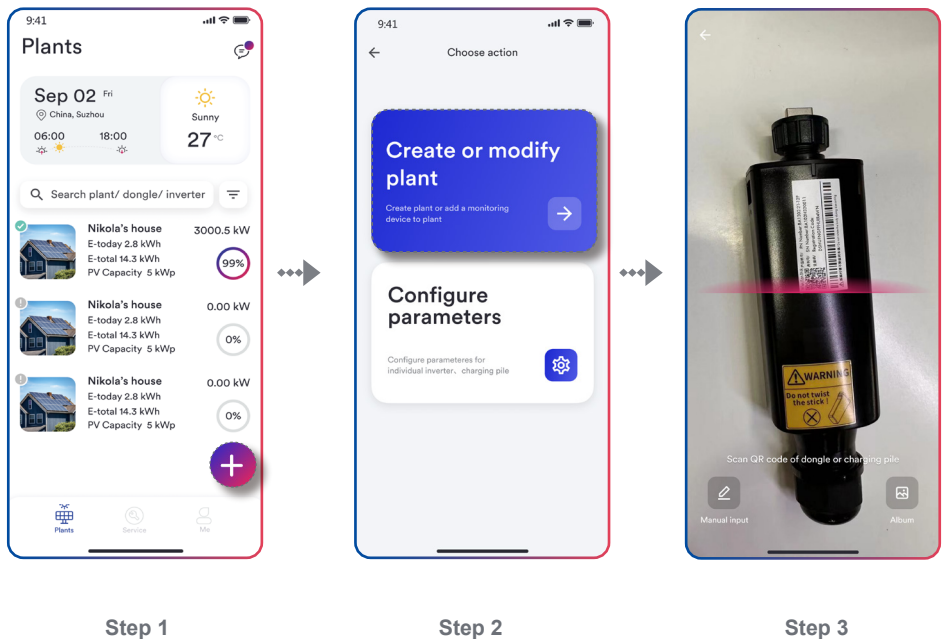
**Step3.** Scan dongle QR code or manually enter the serial number and the registration code.

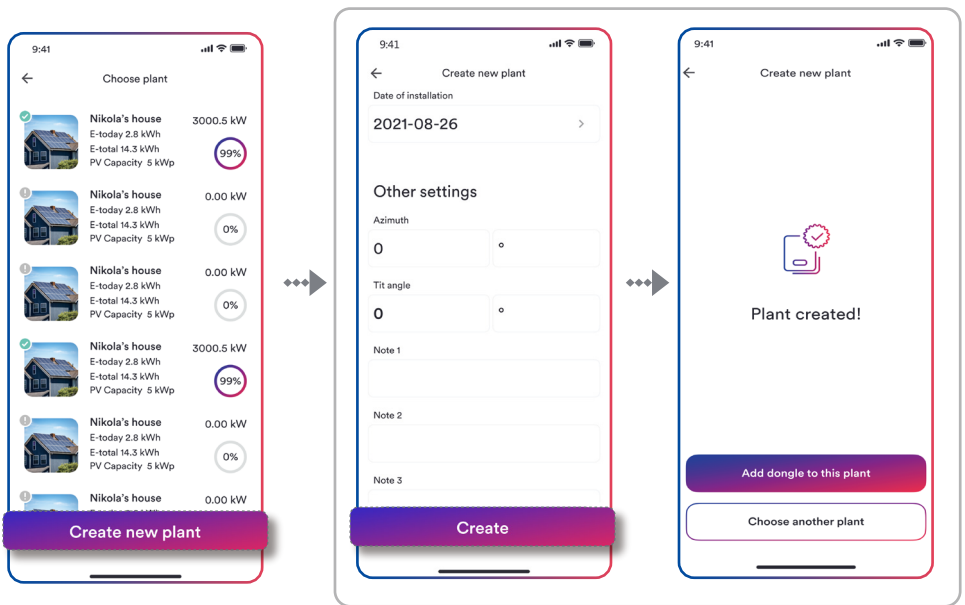
**Step4.** Click “+ Create new plant”.

**Step5.** Enter PV plant information in all fields marked with a red asterisk and tap “Create”.

Optional: Turn on the App location services.

For details, please refer to Figure 6.





Step 4

Step 5

Figure 6. Create a new plant



## 4.1 Add dongle, inverter to plant

---

**Step 1.** Click “Add dongle to this plant” and click “Add to plant”.

**Step 2.** Click “Connect to dongle access point”.

**Step 3.** Click the inverter serial number that matches your inverter, then click “Grid Code Settings”. Select the correct grid code and click “Save”. The page will refresh, returning to the previous page.



Both Business users and end users can set the grid code and protection parameters of the inverter when they create a power station for the first time.

**Step 4.** Click “Next step” to set up export power limitation or consumption monitoring tap “Yes” otherwise tap “Skip” and proceed to Step 6.

**Step 5.** Select the brand of the meter you installed, and set this page according to your needs. Click “Save” and click “Next step”.

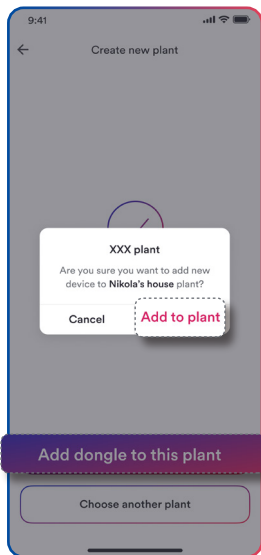


If you want the “Export Power Control” you set to take effect, you need to click “Save” first, and then click “Next step”. If you click “Next step” directly, the settings on this page will not take effect.

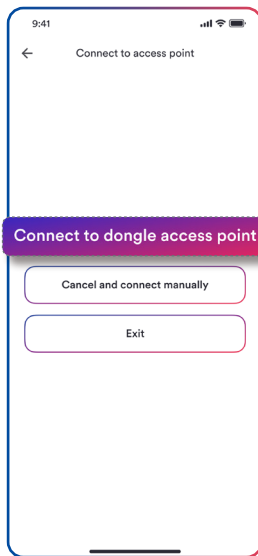
**Step 6.** Click “Continue”, select Wi-Fi network from list and enter Wi-Fi password, then click “Continue”.

**Step 7.** Next, you need to observe whether the Led blue light of the dongle stays on. If it is always on, it means that the network configuration is successful, and you can click “Completed” to complete the configuration. Otherwise, you need to go back to the previous step and re-enter the Wi-Fi password.

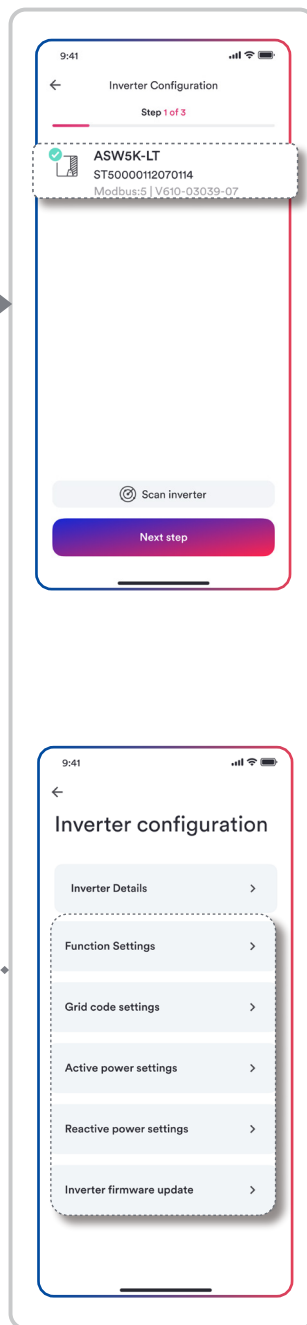
For details, please refer to Figure 8.



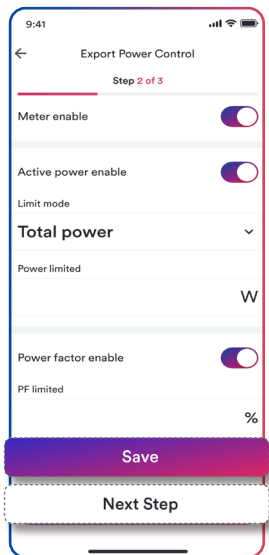
Step 1



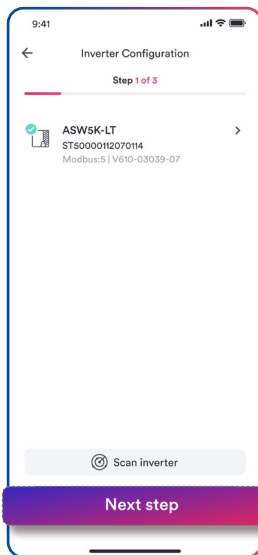
Step 2



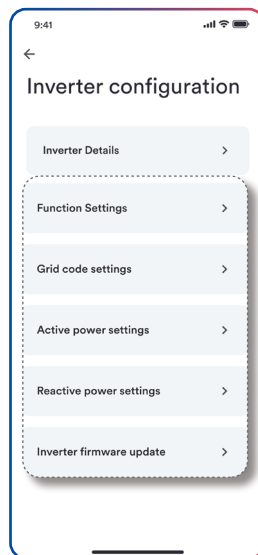
Step 3



Step 5



Step 4



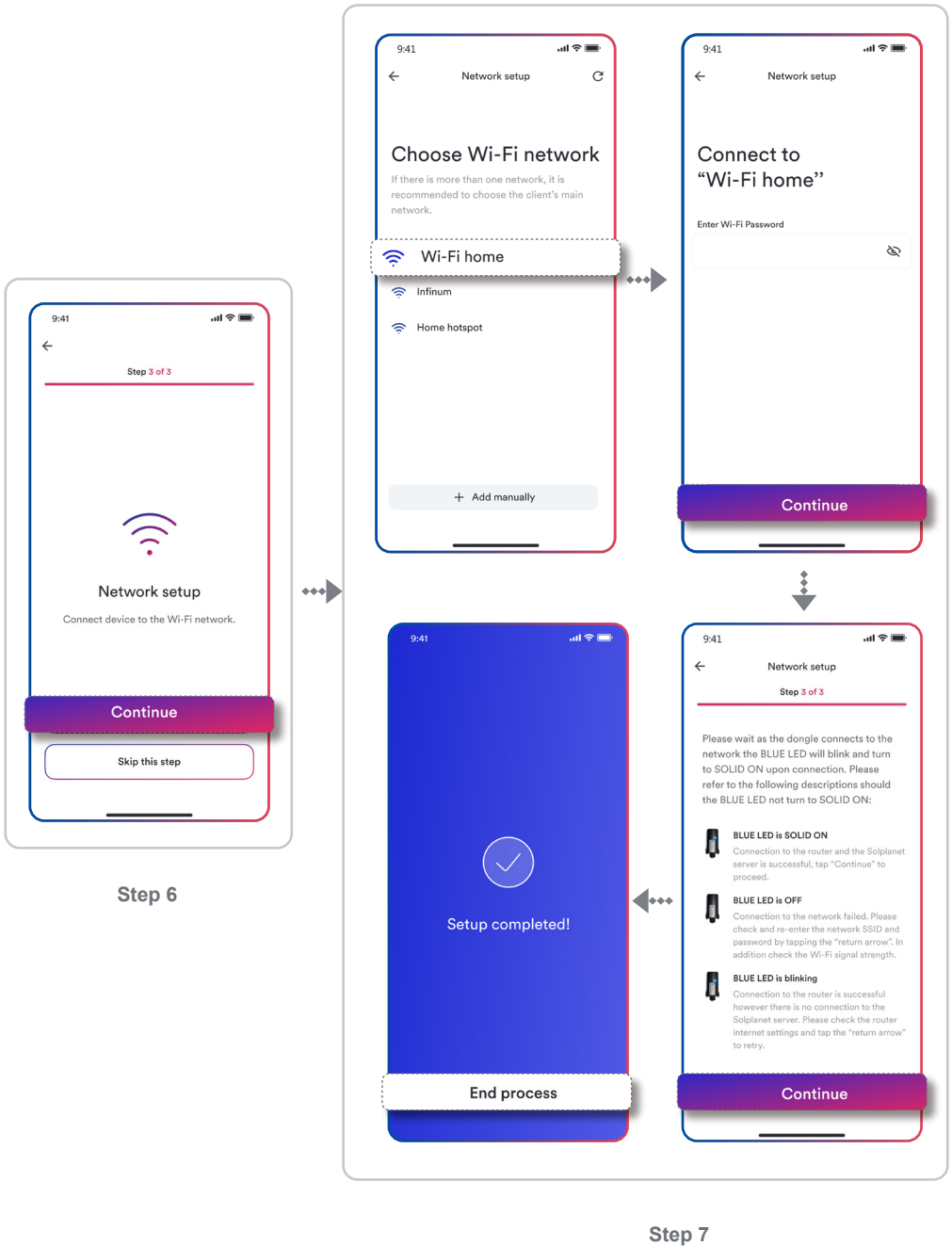


Figure 8. Add dongle, inverter to plan

## 4.2 Add EV Charger to plant

**Step 1.** Enter your account and password, then tap “Log in” (if you do not have account, please refer to 3.1 above).

**Step 2.** Click “Add charger to this plant”.

**Step 3.** Device will connect to the EV charger please do not perform any operation at this time, wait a few minutes until “Configuration success!” is shown.

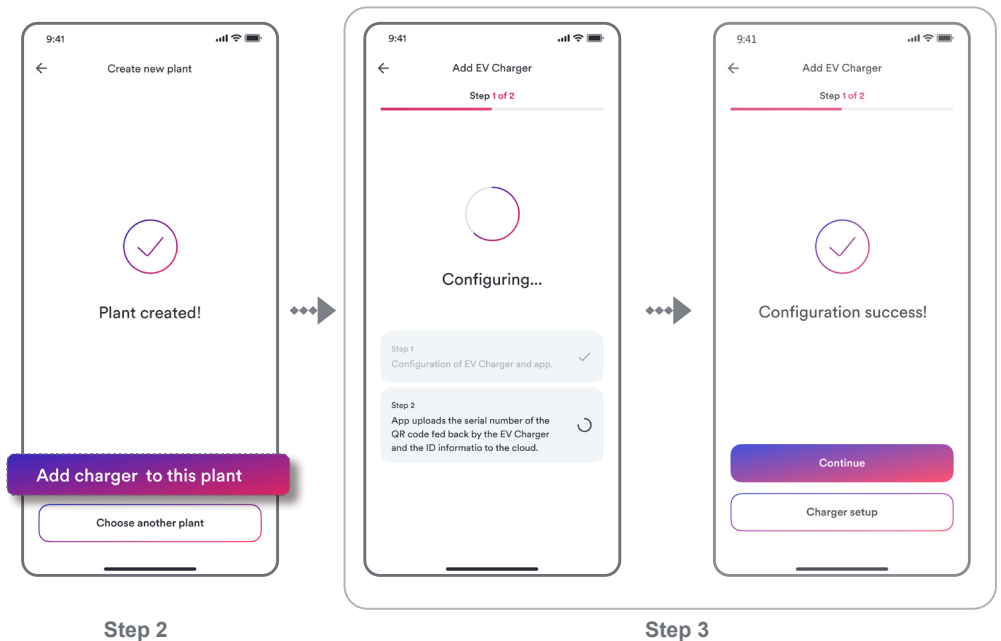
**Step 4.** The network configuration screen appear to click “Continue”.

**Step 5.** Choose your Wi-Fi network from List and enter the Wi-Fi account and password, then click “Continue”.

**Step 6.** Start connecting to the network.

**Step 7.** Until it appears “Success”, then click “Continue”.

For details, please refer to Figure 9.



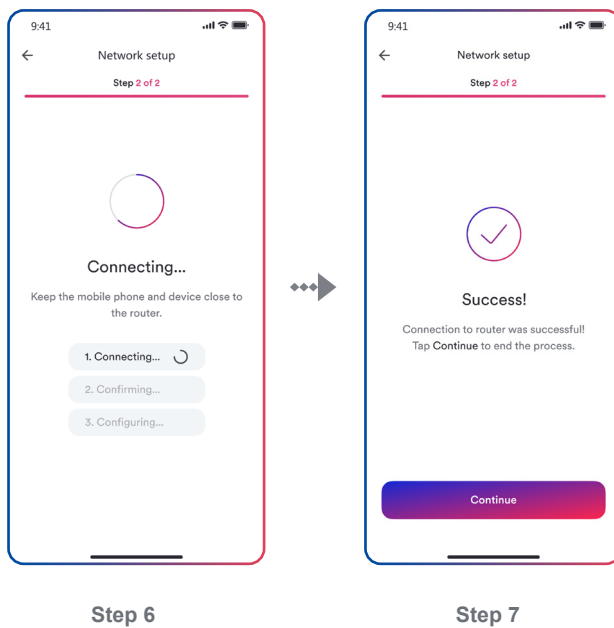
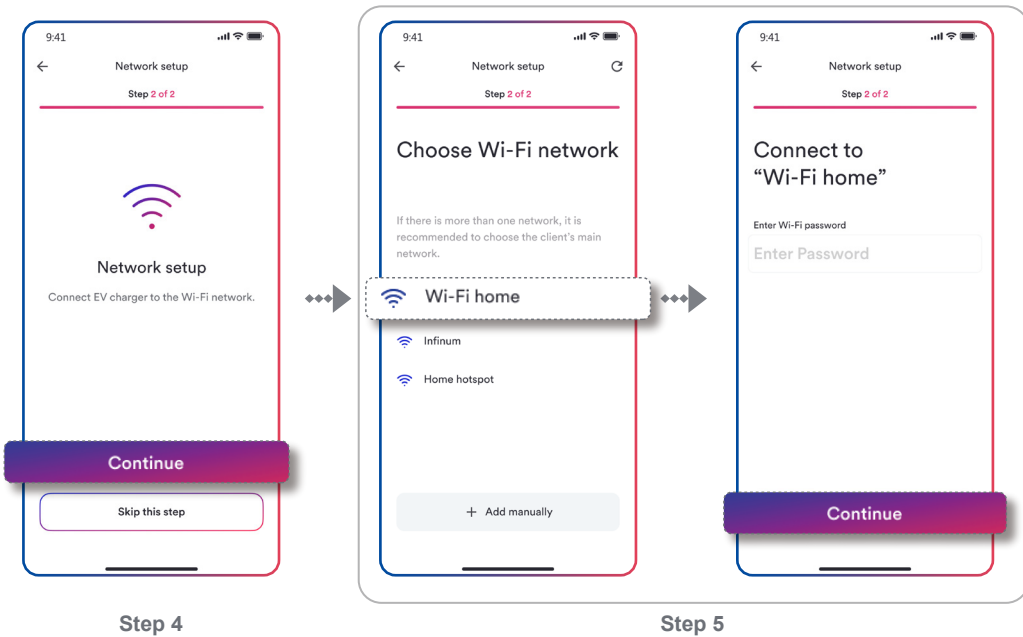


Figure 9. Add EV Charger to plant

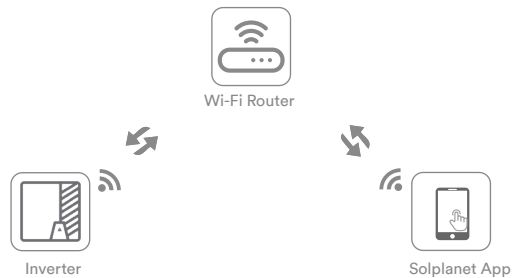
## 5

# Inverter Setting parameters

## 5.1 Confirm the connection method

### 5.1.1 Set by “Network configuration”

If you have configured any Wi-Fi network for the inverter before (the blue LED on the dongle should be solid ON), you can use this mode to modify the parameters.



\*Connect smart phone to the same Wi-Fi network that the dongle is connected to.

**Step1.** Click on the “+” icon.

**Step2.** Click the “Configure parameters” icon.

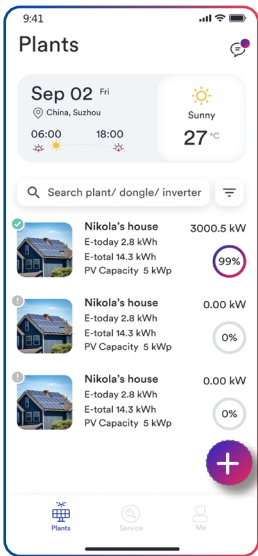
**Step3.** Scan dongle QR code or manually enter the serial number and the registration code.

**Step4.** Select the “Network” entry, where you can set inverter-related parameters(grid code etc), change network, set export power limitation, and set dongle parameters etc.

### Notice

Business users and end users have different permissions here. Business users can modify the inverter grid code and protection parameter settings for the inverter. However, end users can only perform firmware upgrade operations here.

For details, please refer to Figure 10.



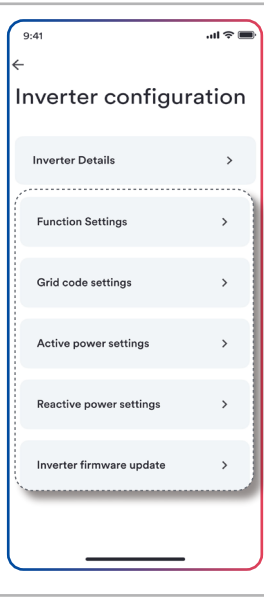
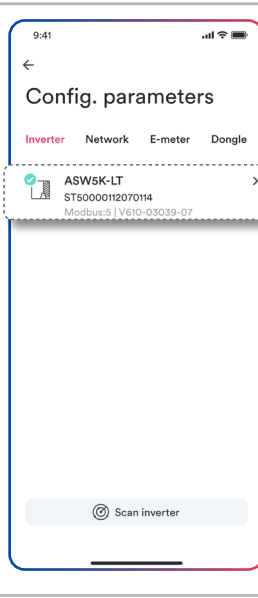
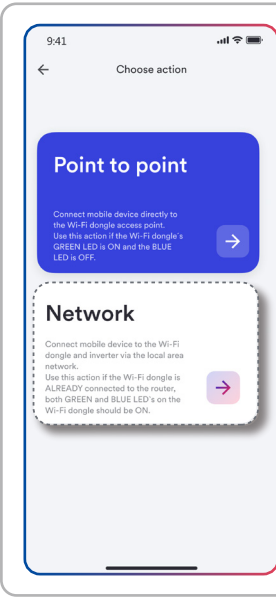
Step 1



Step 2



Step 3



Step 4

Figure 10. Network configuration

## 5.1.2 Set by “Device hotspot configuration”



If you have not configured any Wi-Fi network for the inverter before (Only the green light is on), you can use this mode to modify the parameters.

**Step1.** Click on the “+” icon.

**Step2.** Click the “Configure parameters” icon.

**Step3.** Scan dongle QR code or manually enter the serial number and the registration code.

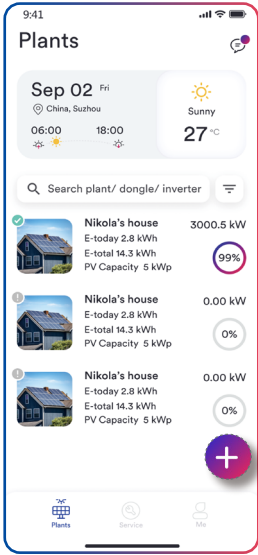
**Step4.** Select the “Point to point” entry, where you can set inverter-related parameters (grid code etc), change network, set export power limitation, and set dongle parameters etc.

### **Notice**

Business users and end users have different permissions here. Business users can modify the inverter grid code and protection parameter settings for the inverter. However, end users can only perform firmware upgrade operations here.

For details, please refer to Figure 11.





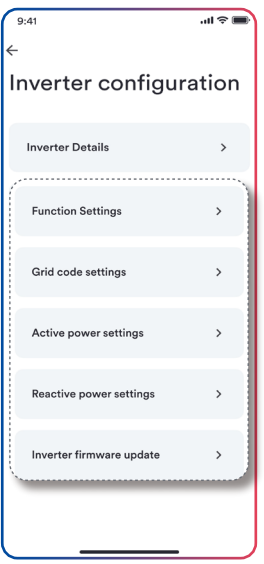
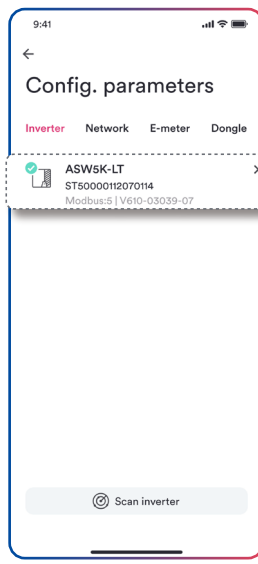
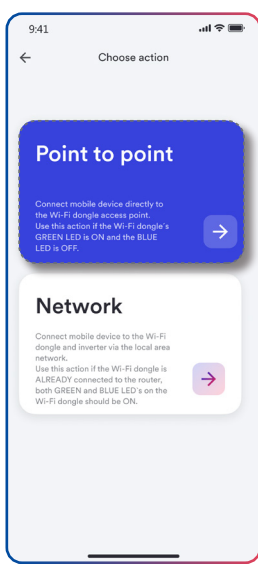
Step 1



Step 2



Step 3



Step 4

Figure 11. Device hotspot configuration

## 5.2 Inverter list

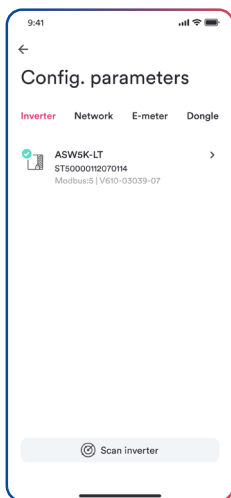


Figure 12. Inverter list

As shown in Figure 12, This page provides a list of monitored inverters. If there are multiple inverters to be monitored, click “Scan inverter” and wait for 5 minutes.

As shown in Figure 13, the inverter configuration should be set carefully under the guidance of professionals.

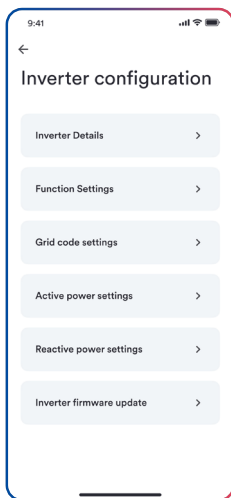


Figure 13. Inverter list



Inverter parameter configuration requires very professional inverter and power grid knowledge. If the configuration is wrong, it may damage the inverter or cause the grid to be abnormal, so please operate under the guidance of professionals.

### 5.2.1 Inverter details

Please refer to Inverter Manual for the explanation of inverter error codes.

The page displays the inverter serial number and inverter details as shown in Figure 14.

You can view ac, dc, E-Today, E-Total, H-Total, power, data update time, error code, and PF value.

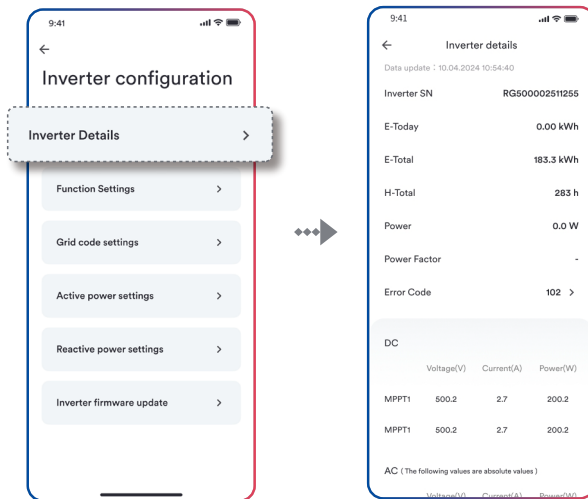


Figure 14. Inverter details

### 5.2.2 General function settings

As shown in Figure 15, each function has an enable switch. Once turned on, the function will be enabled.

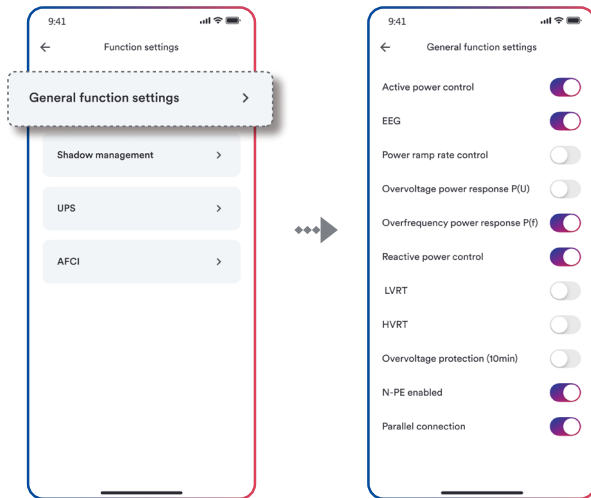


Figure 15. General function settings

### 5.2.3 Grid code settings

As shown in Figure 16, this page is used to switch the safety standard code.

National standard:

Normally, the national standards required by the power grid companies in various regions are covered when the equipment leaves the factory, and you do not need to reset it.

If the current national standard is not set reasonably according to the requirements of your local power grid company, please click “national standard” to select the correct national standard option and click to set it.

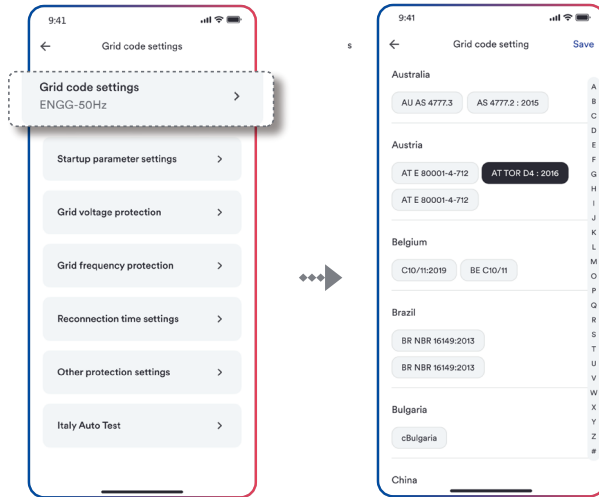


Figure 16. Grid code settings

## 5.2.4 Startup parameter settings

Start voltage and start frequency

Click “Startup parameter settings”, the next page will display the parameters, as shown in Figure 17.

The appropriate start voltage range and frequency range can be set according to the requirements of the local power grid company.

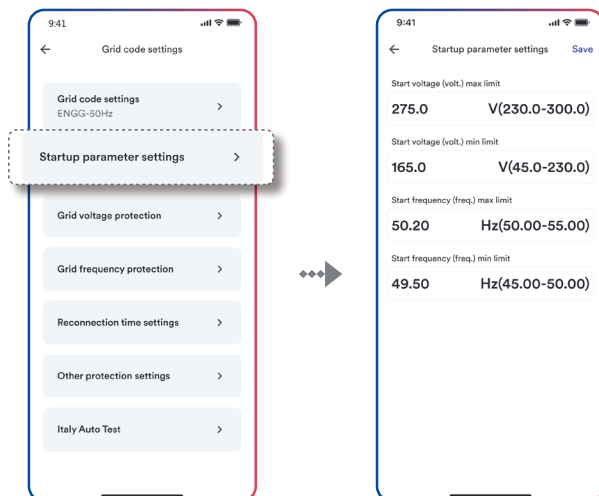


Figure 17. Startup parameter settings

## 5.2.5 Grid voltage protection settings

Voltage monitoring: Click “Grid voltage protection”, the next page will display the parameters, as shown in Figure 18.

There are three threshold levels for overvoltage and undervoltage protection. The Stage 1 threshold represents the minimum range, and the Stage 3 threshold represents the maximum range.

All thresholds need to follow the following principles:

Maximum Stage 1 threshold ≤ maximum Stage 2 threshold ≤ Maximum Stage 3 threshold

Minimum Stage 1 threshold ≥ minimum Stage 2 threshold ≥ Minimum Stage 3 threshold

Stage 1 operate time ≤ Stage 2 operate time ≤ Stage 3 operate time



Figure 18. Grid voltage protection settings

## 5.2.6 Grid frequency protection settings

Frequency monitoring: Click “Grid frequency protection”, the next page will display the parameters, as shown in Figure 19.

There are three threshold levels for overfrequency and underfrequency protection. The Stage 1 threshold represents the minimum range, and the Stage 3 threshold represents the maximum range.

All thresholds need to follow the following principles:

Maximum Stage 1 threshold ≤ maximum Stage 2 threshold ≤ Maximum Stage 3 threshold

Minimum Stage 1 threshold ≥ minimum Stage 2 threshold ≥ Minimum Stage 3 threshold

Stage 1 operate time ≤ Stage 2 operate time ≤ Stage 3 operate time

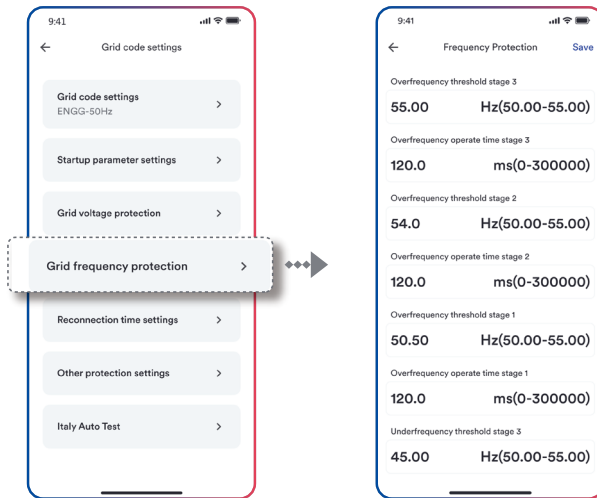


Figure 19. Grid frequency protection settings

### 5.2.7 Reconnection time settings

Connection and reconnection time: Click “Reconnection time settings” next page will display the parameters, as shown in Figure 20.

Before the inverter is connected or reconnected to the grid, the observation time for observing that all voltage and frequency values are within the specified range can be set on this page.

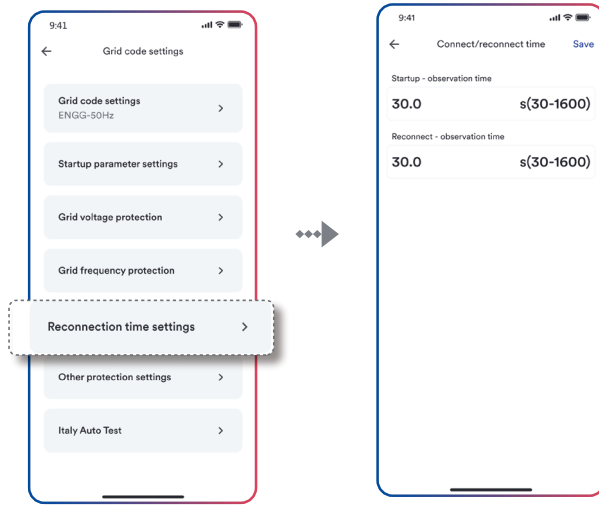


Figure 20. Reconnection time settings

### 5.2.8 Other protection settings

Inverters used with ungrounded or functionally grounded arrays should have a method of measuring the DC insulation resistance from the photovoltaic input (array) to ground before starting operation. The minimum insulation resistance can be set on this page, as shown in Figure 21.



Figure 21. Other protection settings



## 5.2.9 Ramp rate settings

After connection or reconnection, the active power generated by the inverter shall not exceed the prescribed gradient, expressed as a percentage of the nominal active power of the inverter per minute. You can set the “Startup - active power increase gradient” and “Reconnect- active power increase gradient” as required, as shown in Figure 22.

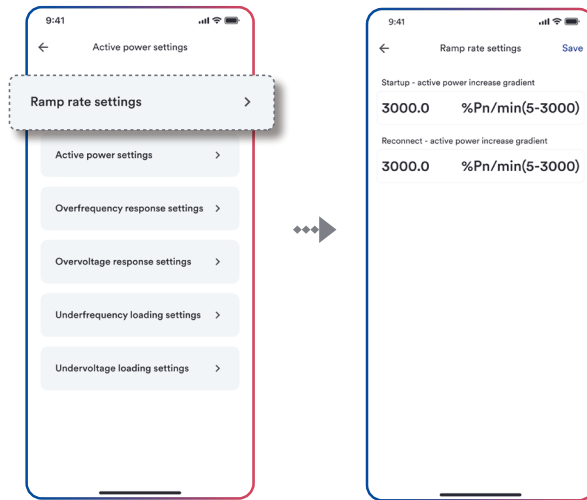


Figure 22. Ramp rate settings

## 5.2.10 Active power settings

During AC operation and while controlling or changing powers, the active power generated by the inverter shall not exceed the prescribed gradient, expressed as a percentage of the nominal active power of the inverter per minute. You can set the “Active power increase gradient” and “Active power reduction gradient” as required, as shown in Figure 23.

The grid company may require you to reduce the set value of active power. You can set the “active power” according to your needs.

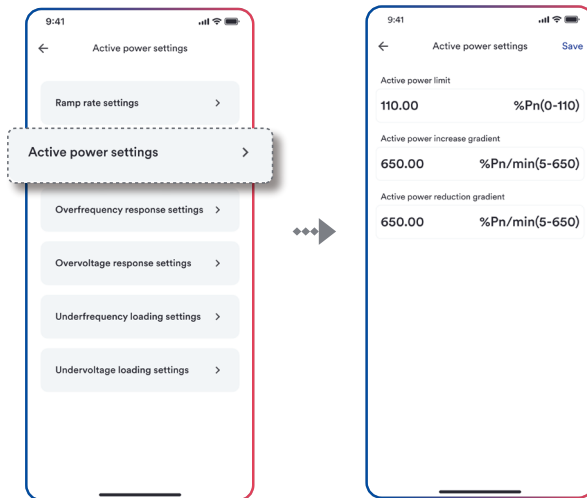


Figure 23. Active power settings

### 5.2.11 Overfrequency response settings

Overfrequency response settings is as shown in Figure 24:

Overfrequency active power reduction  $P(f)$

The inverter can enable the active power overfrequency response at a programmable frequency threshold having programmable droop. Four modes can be selected here.

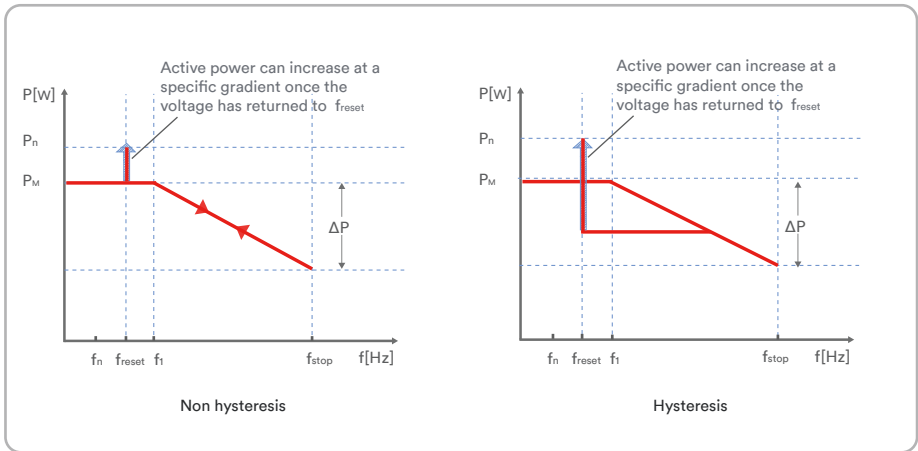
Fixed gradient and non-hysteresis:  $\Delta P$  is a percent active power as a  $P_n$ , and the inverter provides active power overfrequency response control with non-hysteresis.

Fixed gradient and hysteresis:  $\Delta P$  is a percent active power as a  $P_n$ , and the inverter provides active power overfrequency response control with hysteresis.

Variable gradient and non-hysteresis:  $\Delta P$  is a percentage of active power to  $P_M$ , and the inverter provides active power overfrequency response control with non-hysteresis.

Variable gradient and hysteresis:  $\Delta P$  is a percentage of active power to  $P_M$ , and the inverter provides active power overfrequency response control with hysteresis.

The figure below describes the difference between control with hysteresis and non-hysteresis.



$f_n$ : Rated frequency

$f_{reset}$ : Reset frequency

$f_{start}$ : Start frequency

$f_{stop}$ : Stop frequency

$\Delta P$ : Percentage of active power reduction

The intentional delay time of  $p(f)$  is only active for frequency after  $f_{start}$ , and the intentional delay time plus the inherent dead time should be less than 2s.

The minimum delay time of active power release is a delay time that can increase active power after the  $f_{reset}$  frequency.

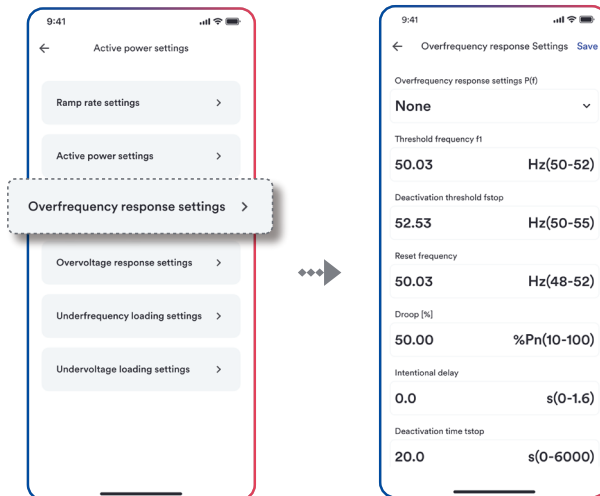


Figure 24. Overfrequency response settings

## 5.2.12 Overvoltage response settings

Overvoltage response settings is as shown in Figure 25:

Overvoltage active power reduction  $P(v)$

The inverter can enable the active power overvoltage response at a programmable voltage threshold having programmable droop. Five modes can be selected here.

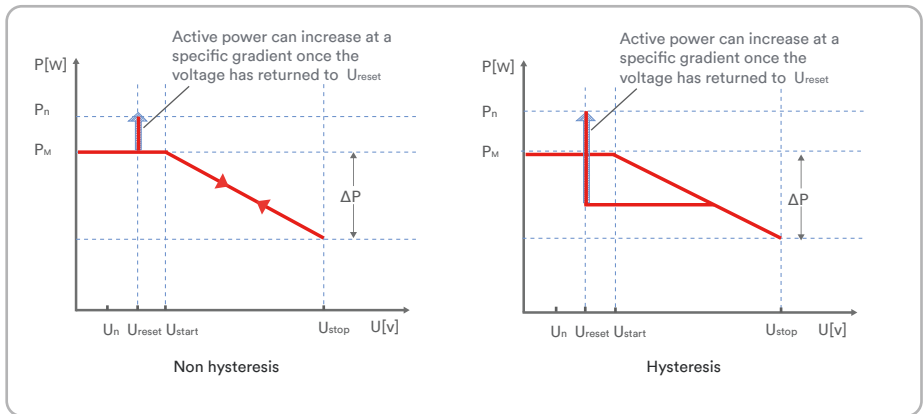
Fixed gradient and non-hysteresis:  $\Delta P$  is a percent active power as a  $P_n$ , and the inverter provides active power overvoltage response control with non-hysteresis.

Fixed gradient and hysteresis:  $\Delta P$  is a percent active power as a  $P_n$ , and the inverter provides active power overvoltage response control with hysteresis.

Variable gradient and hysteresis:  $\Delta P$  is a percentage of active power to  $P_M$ , and the inverter provides active power overvoltage response control with hysteresis.

Variable gradient and hysteresis:  $\Delta P$  is a percentage of active power to  $P_M$ , and the inverter provides active power overvoltage response control with hysteresis.

The difference between control with hysteresis and non-hysteresis is described below.



$f_{reset}$ : Reset voltage

$f_{start}$ : Start voltage

$f_{stop}$ : Stop voltage

$\Delta P$  : Percentage of active power reduction

The intentional delay time of  $p(f)$  is only active for voltage after  $U_{start}$ , and the intentional delay time plus the inherent dead time should be less than 2s.

The minimum delay time of active power release is a delay time that can increase active power after the  $U_{reset}$  voltage.

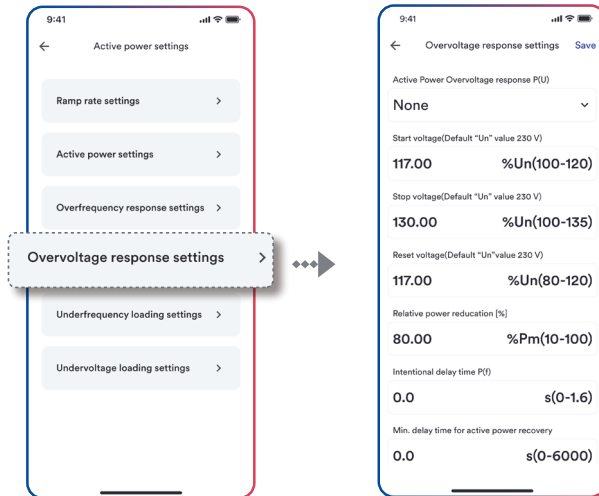


Figure 25. Overvoltage response settings

### 5.2.13 Underfrequency loading settings

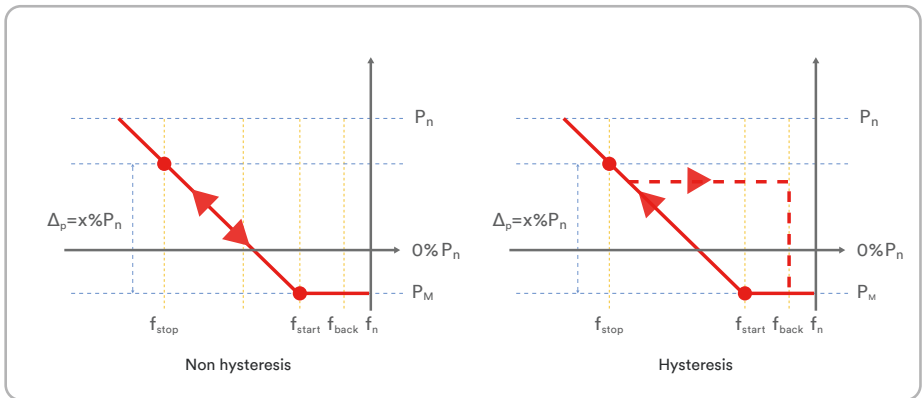
Underfrequency loading settings is as shown in Figure 26:

Active power increasing at underfrequency  $P(f)$

The inverter may be capable of activating active power response to underfrequency at a programmable frequency threshold with a programmable droop. There are two mode can be chosen here.

Fix gradient and non-hysteresis:  $\Delta P$  is the active power as a percentage of  $P_n$ , the inverter provide non-hysteresis in the control of active power response to underfrequency.

Fix gradient and hysteresis:  $\Delta P$  is the active power as a percentage of  $P_n$ , the inverter provide hysteresis in the control of active power response to underfrequency.



$f_n$ : The rated frequency

$f_{reset}$ : Reset frequency

$f_{start}$ : Starting frequency

$f_{stop}$ : Stopping frequency

$\Delta P$  : Active power in percentage of  $P_n$

Intentional delay time for  $P(f)$  is only active for the activation of the function after the frequency under  $f_{start}$ , and the intentional delay time plus inherent dead time shall be less than 2s.

Min. delay time for active power release is the delay time that the active power can decrease after the frequency over  $f_{reset}$ .

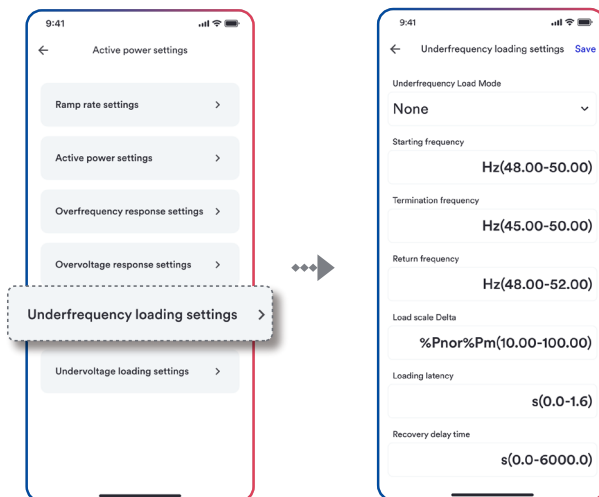


Figure 26. Underfrequency loading settings

## 5.2.14 Undervoltage loading settings

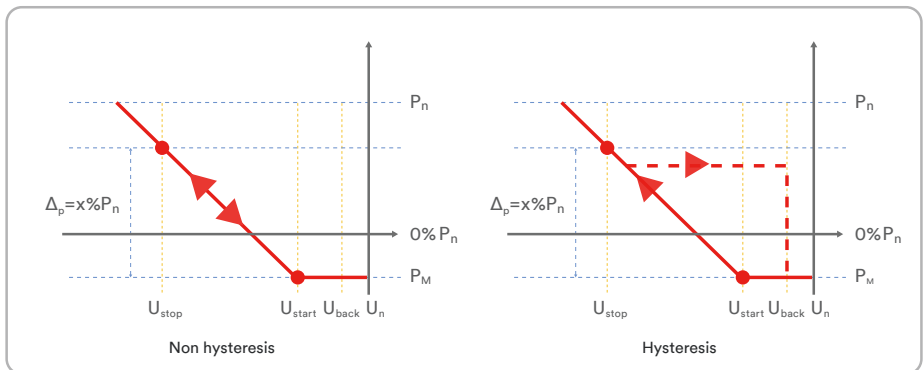
Undervoltage loading settings is as shown in Figure 27:

Active power increasing at undervoltage P(v)

The inverter may be capable of activating active power response to undervoltage at a programmable voltage threshold with a programmable droop. There are two mode can be chosen here. Fix gradient and non-hysteresis:  $\Delta P$  is the active power as a percentage of  $P_n$ , the inverter provide non-hysteresis in the control of active power response to undervoltage.

Fix gradient and hysteresis:  $\Delta P$  is the active power as a percentage of  $P_n$ , the inverter provide hysteresis in the control of active power response to undervoltage.

The below figure describes the difference between hysteresis and non-hysteresis control.



$U_n$ : The rated voltage

$U_{reset}$ : Reset voltage

$U_{start}$ : Starting voltage

$U_{stop}$ : Stopping voltage

$\Delta P$  : Active power in percentage of  $P_n$

Intentional delay time for P(v) is only active for the activation of the function after the voltage under  $U_{start}$ , and the intentional delay time plus inherent dead time shall be less than 2s.

Min. delay time for active power release is the delay time that the active power can decrease after the voltage over  $U_{reset}$ .

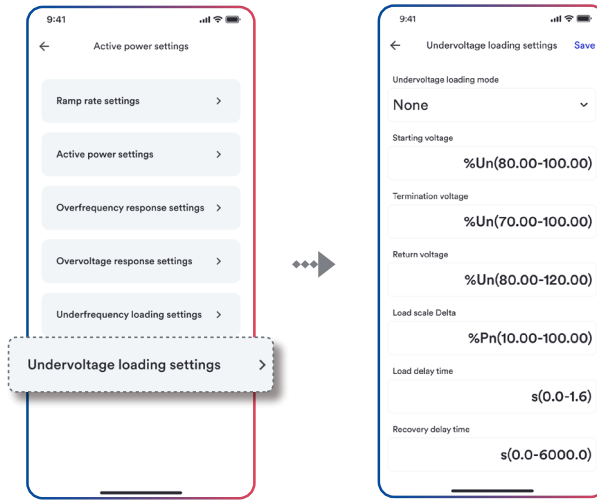


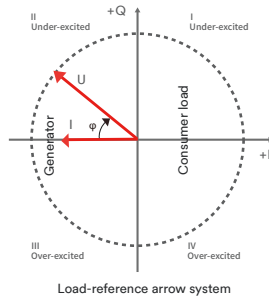
Figure 27. Undervoltage loading settings

### 5.2.15 Reactive power settings

Reactive power settings are shown in Figure 28:

The inverter may need to control voltage by generating and absorb reactive power. There are seven reactive power control modes. Only one mode can be activated each time.

From the perspective of the national grid, the inverter is used as a load standard. This refers to the inverter in Quadrant II (under-Excited) or III (Overexcited) as follows.





Over-excited reactive power is also called capacitor reactive power or advance power factor  
 Under-excited reactive power is also called inductive reactive power or hysteresis power factor  
 Click 'Reactive power mode' to select mode. Then first set the “Triple time constant”. The change in reactive power may need to correspond to the first filter. “Triple time constant” is the three time constants of the filter, which is 95% of the nominal value.

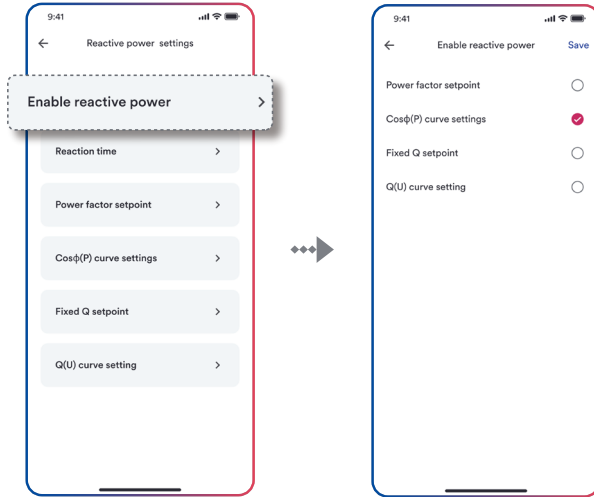


Figure 28. Static reactive power

### 5.2.16 Reaction time

Time constant settings is as shown in Figure 29:

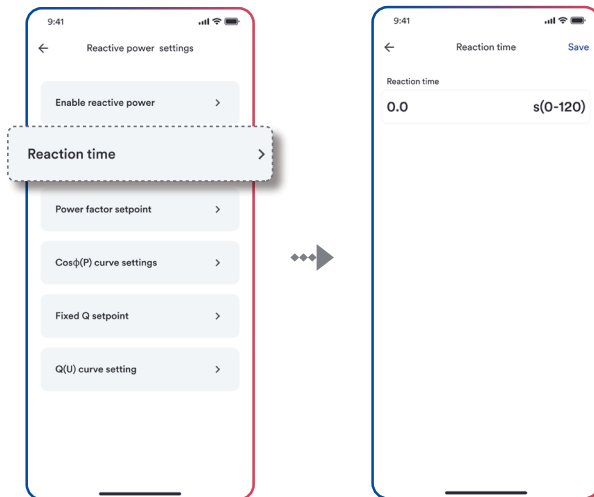


Figure 29. Time constant

## 5.2.17 Power factor settings

COS $\phi$  setpoint configuration is as shown in Figure 30:

Can set fixed displacement coefficient cos $\phi$

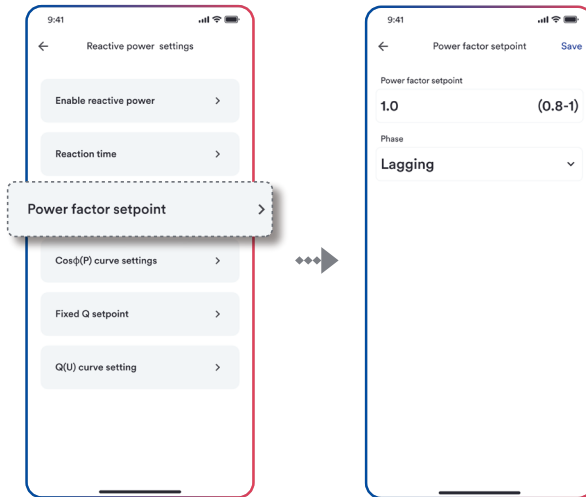


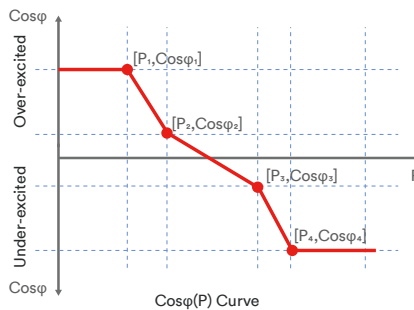
Figure 30. Power factor setpoint

## 5.2.18 Cos (P)curve settings

Cos (P) curve settings is as shown in Figure 31:

Power related control mode COS (P) controls output COS $\phi$  as a function of active power output

There are four adjustable coordinate points on the curve, as shown below



The coordinate point is the active power and displacement coefficient cos $\phi$  as the proportion of Pn.

Some grid companies may require two voltage thresholds as the percentage of  $U_n$  to activate or deactivate this feature. Voltage threshold is often referred to as “locked” and “lockout” voltage. The activation threshold (percentage of  $U_n$ ) corresponds to the “locked” voltage. The deactivation threshold (percentage of  $U_n$ ) corresponds to the “lockout” voltage.

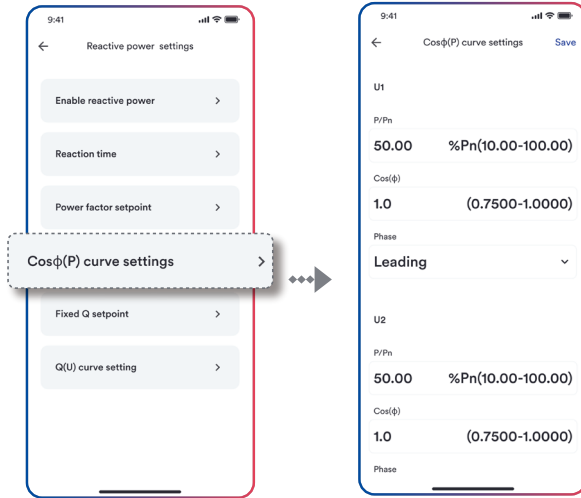


Figure 31. Cos(φ) curve settings

### 5.2.19 Fixed Q setpoint

Fixed reactive power setting is as shown in Figure 32:

A percentage of fixed reactive power to  $P_n$  can be set.

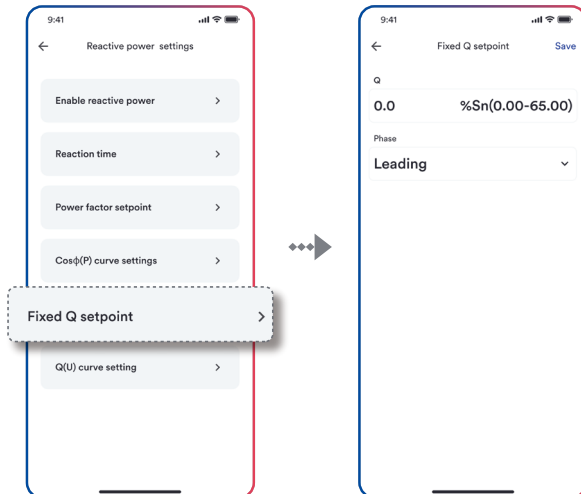


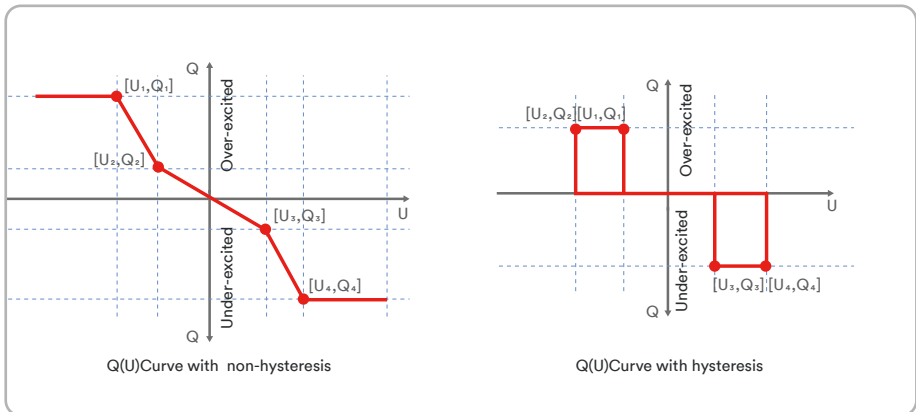
Figure 32. Fixed Q setpoint

## 5.2.20 Q(U) curve adjustment

Q(U) curve settings is as shown in Figure 33:

Voltage-related voltage control mode Q(U) controls reactive power output as a function of voltage.

There are four adjustable coordinate points, the difference between non-hysteresis control and hysteresis control in the curve is as shown below.



The coordinate point is the percentage of the voltage (the percentage of  $U_n$ ) and the reactive power ( $P_n$ ).

Some grid companies may require two active power thresholds as the percentage of  $P_n$  to activate or deactivate this feature. The active power threshold is often referred to as “non-hysteresis” and “hysteresis” active power.

The activation threshold (percentage of  $P_n$ ) corresponds to the “locked” active power.

The deactivation threshold (percentage of  $U_n$ ) corresponds to the “lockout” voltage.

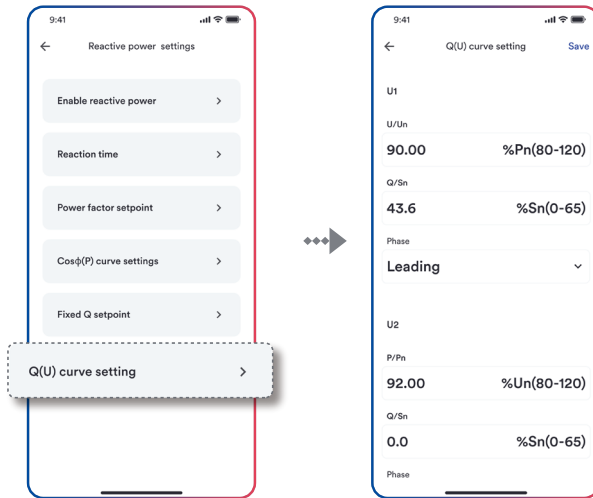


Figure 33. Q(U) curve adjustment

### 5.2.21 Inverter firmware upgrade

If you want to upgrade the firmware of the inverter, as shown in Figure 34:

**Step1.** Save the firmware to your smart phone.

**Step2.** Click the update button to find the firmware in your smart phone.

**Step3.** Wait for the uploading and keep the power during the upgrade process, and the whole process will take about 10 minutes at least. After 10 minutes, you can check the firmware with the tool app.

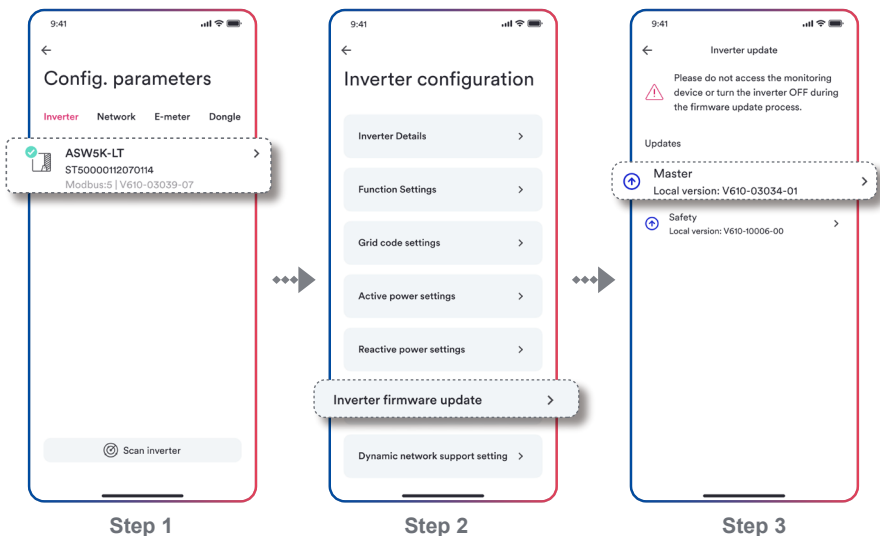


Figure 34. Inverter firmware upgrade

## 5.2.22 Energy storage settings

If you have an energy storage inverter, you can set information such as battery here, choose the brand of battery you install, the number of blocks, and set the battery operating mode you want, as shown in Figure 35:

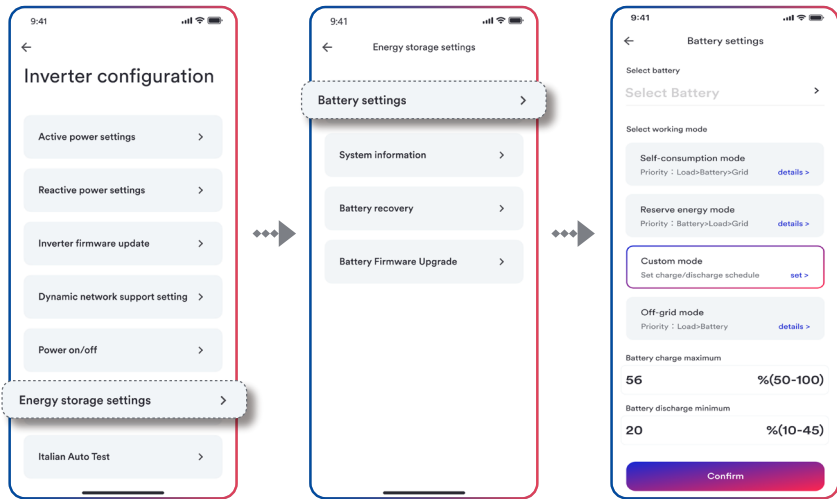


Figure 35. Energy storage settings

### Introduction to battery working mode

#### Self-consumption mode

Priority: Load > Battery > Grid

- This mode uses the available power from the PV panels and battery to minimise the power consumption from the electricity grid.
- Excess power generated by the PV.
- panels will charge the battery.
- When completely charged the excess power may be exported to the grid.

### **Reserve storage mode**

Priority: Battery > Load > Grid

- This mode is similar to the self-consumption mode however a certain amount of battery capacity will be reserved for emergency power use during, for example, a grid failure or black-out.
- The reserve capacity can be adjusted according to the specific needs.

### **Custom mode**

- This mode is mainly used for the peak-to-valley price difference in the electricity price, and the charging and discharging time period and charging and discharging power can be customized.

### **Off-grid mode**

Priority: Load > Battery

- This mode allows the PV plant to operate without a connection to the electricity grid.
- PV panels and a battery is required for this mode.
- Ensure that the load does not exceed the maximum rating of the inverter and the maximum discharge capacity of the battery.

## 5.3 WLAN

Router Page: Configure the monitoring device to connect the network through Wi-Fi, as shown in Figure 36.

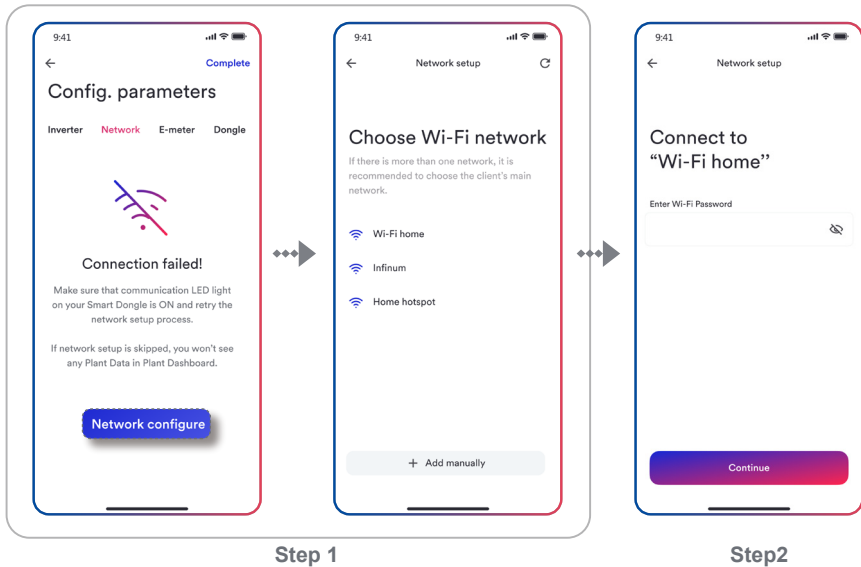


Figure 36. Network - router configuration

**Step1:** Click “Config.parameters” and get the router SSID nearby the Wi-Fi stick.

**Step2:** Choose the router SSID and enter the password. Wi-Fi stick will connect to the router, you can judge whether the router is successfully connected according to the status of the blue LED light:

1. Blue LED off: Wi-Fi stick can't connect to the router, because error password or too far from the router.
2. Blue LED flashing: Wi-Fi stick connects to the router successfully, but can't connect to the cloud server.
3. Blue LED light on: Wi-Fi stick connects to the router and to the cloud server successfully.



If you can't find the SSID in the Wi-Fi list, you can add the SSID manually as shown in Figure 37.

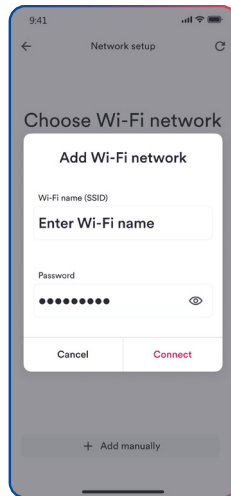


Figure 37. Network - router configuration manually

## 5.4 Active power limitation setting

The company's monitoring device can be connected via smart meter protocol for controlling power output or user power consumption analysis, as shown in Figure 38.

The monitoring device is currently compatible with Eastron (<http://www.eastrongroup.com/>) smart meter models as follows:

SDM630CT
SDM630DC
SDM230
SDM220
SDM120

Click the meter “switch” button to enable or disable meter data monitoring function.

Click on the meter type to select the installed meter. If the meter has been selected and is in the working monitoring state, you need to turn off the meter function first, and then select the meter type again.

Click the Enable active power limitation button to turn on or off the active power limitation function. Target power limit needs to be set after enabling active power limitation function.

Click the Enable reactive power limitation button to turn on or off the power factor adjustment function. PF value needs to be set for reactive power limitation.

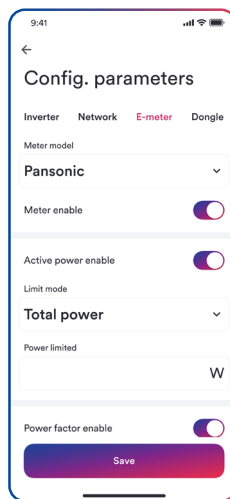


Figure 38. Active power limitation setting

## 5.5 Active power limitation setting

As shown in Figure 39, the basic information of the smart dongle can be viewed in this page.

1. View the status of cloud platform connection: normally connection to the cloud platform is indicated by a green tick; abnormal connection to the cloud platform is indicated by a red exclamation mark, the network exception code is in parentheses, and the code description is shown in appendix 2.
2. Click this button to synchronize the phone's time to the monitoring device. If the monitoring device can access the cloud platform through the external network, the monitoring device will be synchronized with the time of the cloud platform.
3. Click the Reset Smart Dongle button will restore the factory settings. You need to reconfigure the network before you can use it. For details, see 5.3 WLAN.
4. Click the Restart Smart Dongle button will restart the Smart Dongle. You need to rescan and configure parameters in the App.

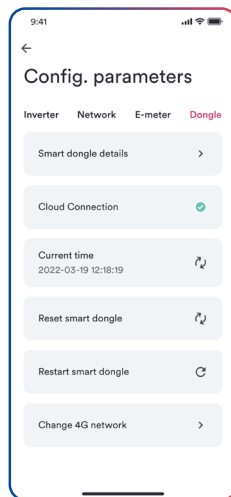


Figure 39. Active power limitation setting

## 5.5.1 Dongle firmware upgrade

Device upgrade is generally done by service personnel with user authorization. You can use your mobile phone to download the device firmware via the mobile phone network, and then send it to the dongle to upgrade, see Figure 40.

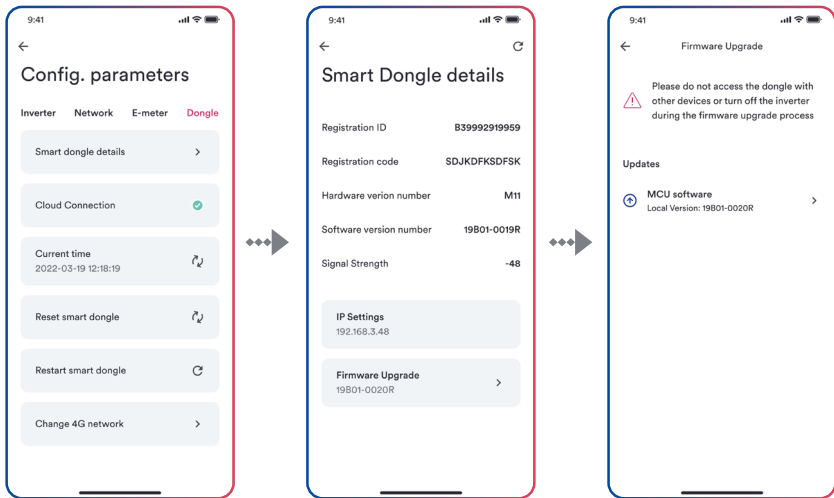


Figure 40. Dongle firmware upgrade

## 6

# EV charger Setting parameters

## 6.1 My EV Charger Screen

The status of the EV charger can be viewed from this screen, as shown in Figure 41.

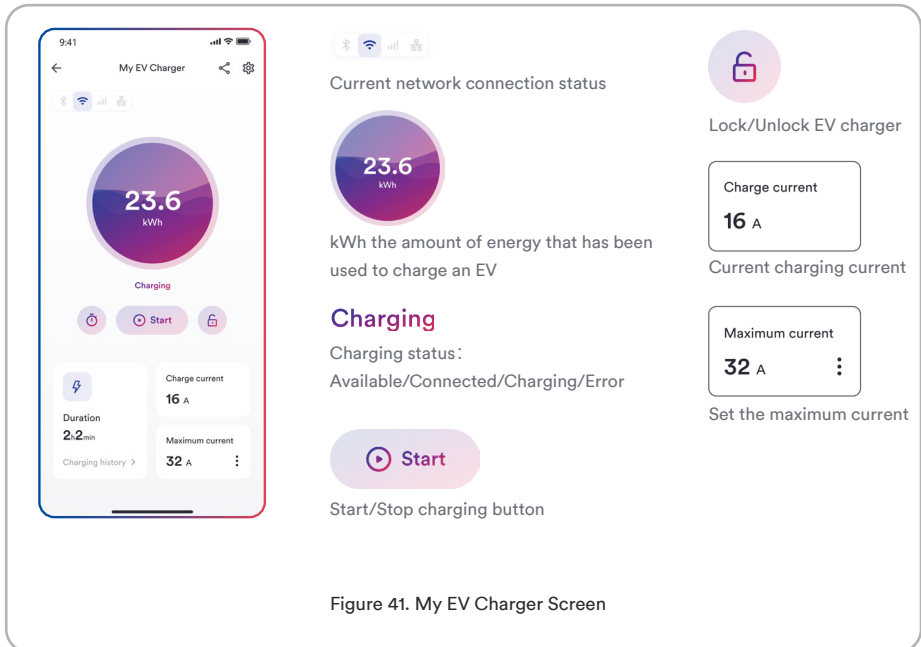


Figure 41. My EV Charger Screen

## 6.2 Scheduled charging

### 6.2.1 Single charge

**Step 1.** Click the scheduled charging icon.

**Step 2.** Click single charge and define start time and end time for charging.

**Step 3.** Click “OK” and the electric vehicle will be charged as per the schedule.

For details, please refer to Figure 42.

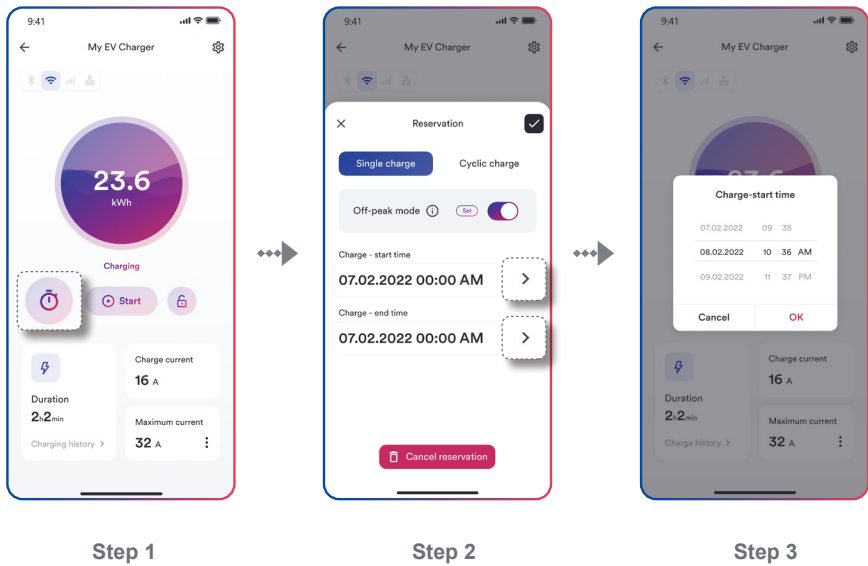


Figure 42. Single charge

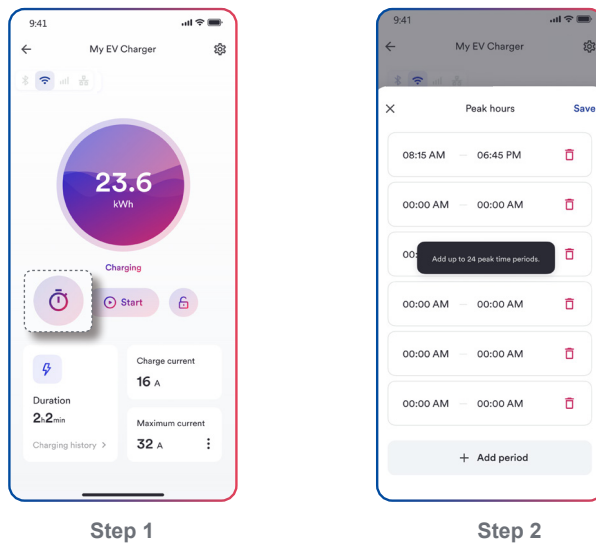
## 6.2.2 Cyclic charge

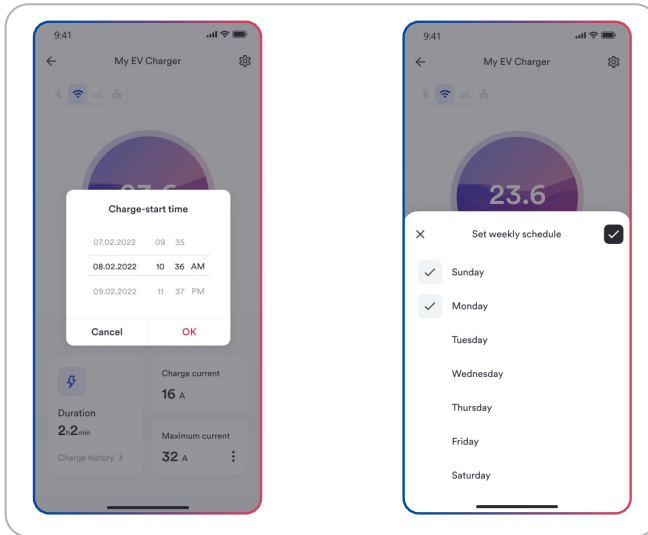
**Step 1.** Click the scheduled charging icon.

**Step 2.** Select single charge, define start time and end time for charging and set weekly schedule.

**Step 3.** Click “OK” and the electric vehicle will be charged as per the schedule.

For details, please refer to Figure 43.





### Step 3

Figure 43. Cyclic charge

## 6.2.3 Off-peak mode

If you turn on the Off-peak mode and specify peak hours, the start and end time will override the pre-set peak hours, charging will automatically pause during peak hours but resume during Off-peak hours.

**Step 1.** Enable Off-peak mode.

**Step 2.** Click “Set” to add peak hour period.

**Step 3.** Click “+ Add” to define peak hours start time and end time.

**Step 4.** Click “OK”, the EV charger will not operate during peak hours.

For details, please refer to Figure 44.

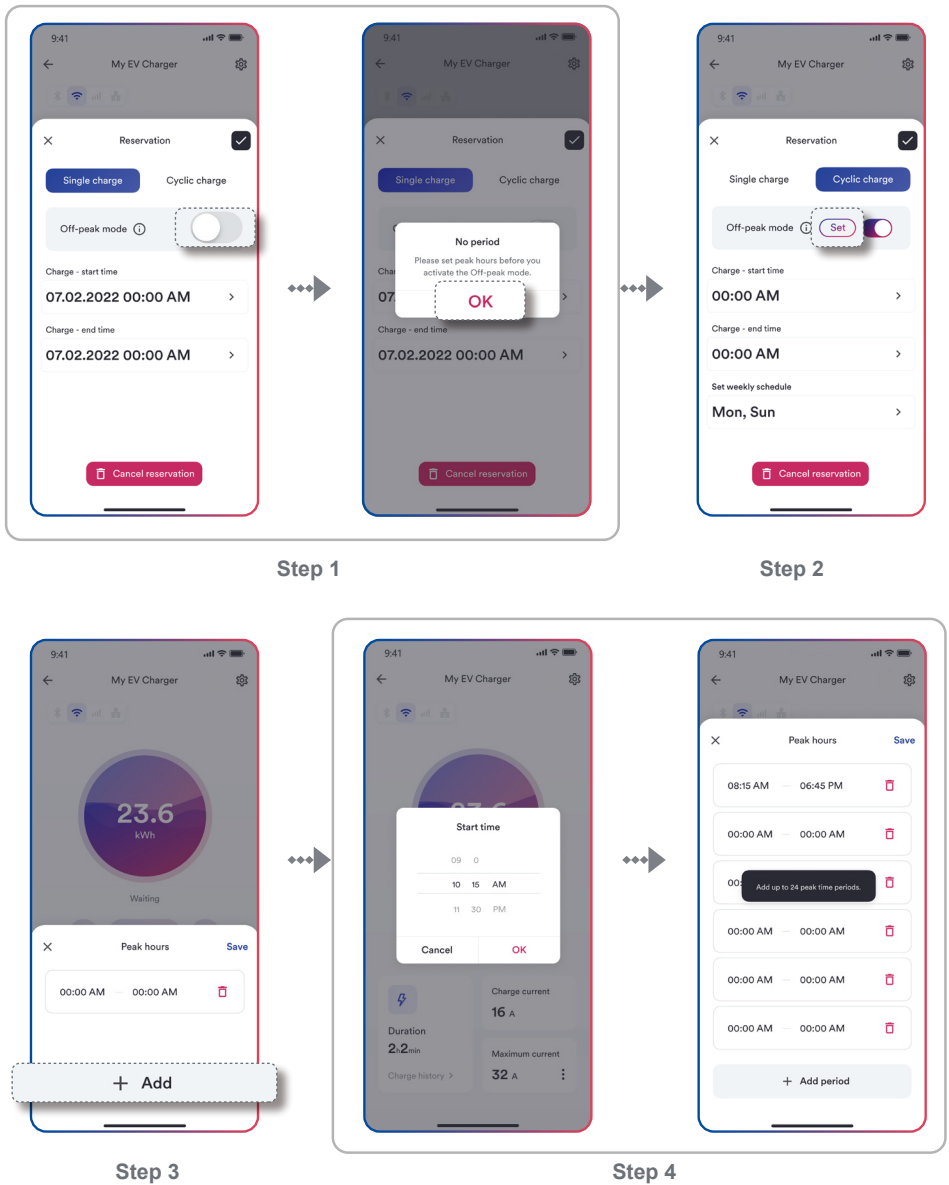


Figure 44. Off-peak mode



## 6.2.4 Scheduled charging for UK region

As per UK's regulation, your EV charger has been pre-set the default charging hours which are outside of peak hours. You can manually turn off Off-peak mode or change the default charging hours after first installation.

\*The given peak hours of charging are 8am-11am and 4pm-10pm. Off-peak switch is enabled by default.

For details, please refer to Figure 45.

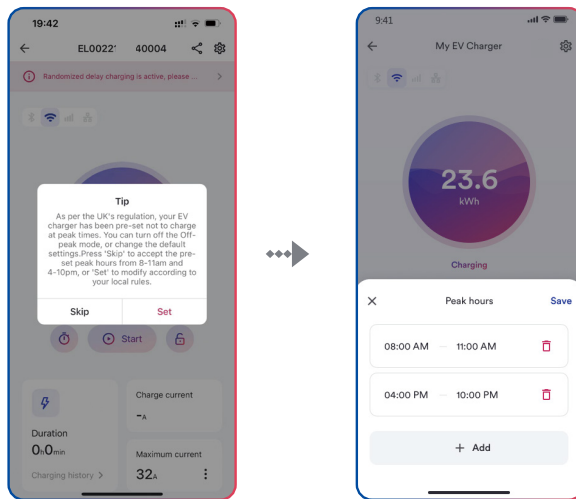


Figure 45. Scheduled charging for UK region

## 6.3 Max. allowable charging current configuration

**Step 1.** Click Setting icon.

**Step 2.** Click “EV charger information”.

**Step 3.** Click Max. allowable charging current and set the maximum allowable charge current used to charge the electric vehicle.

For details, please refer to Figure 46.

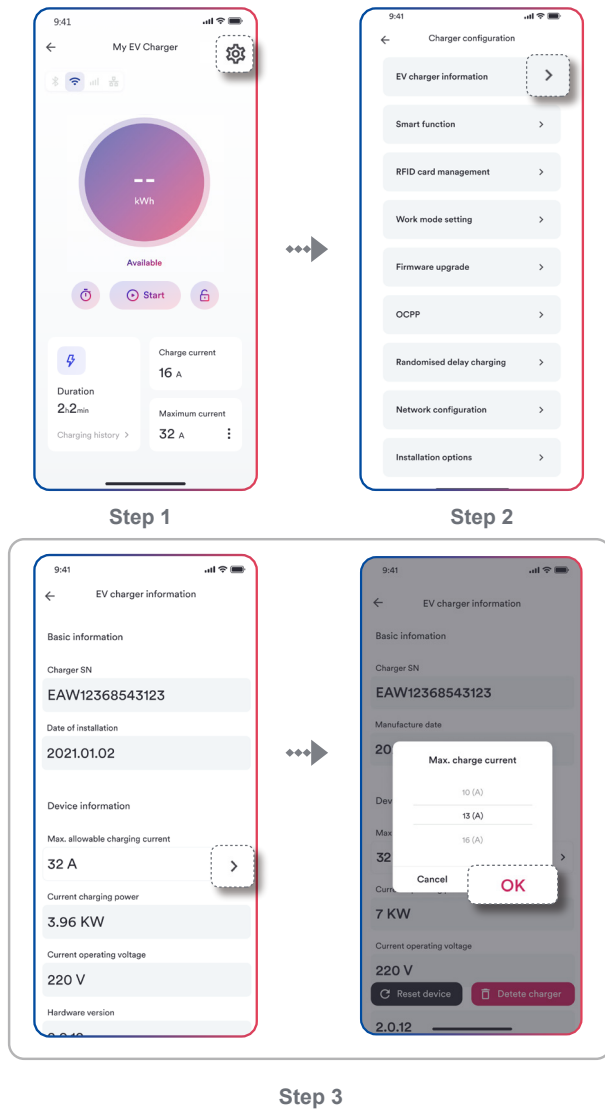


Figure 46. Max. allowable charging current configuration

## Notice

The maximum charging current can be adjusted between 6A and 32A.

## 6.4 Manually to add meter

**Step 1.** Click “Setting” icon.

**Step 2.** Select “EV charger information”.

**Step 3.** Click “Energy meter”.

**Step 4.** Enter the serial number, select smart meter model, the message shows “Configuration successful!”, the energy meter is added successfully.

For details, please refer to Figure 47.

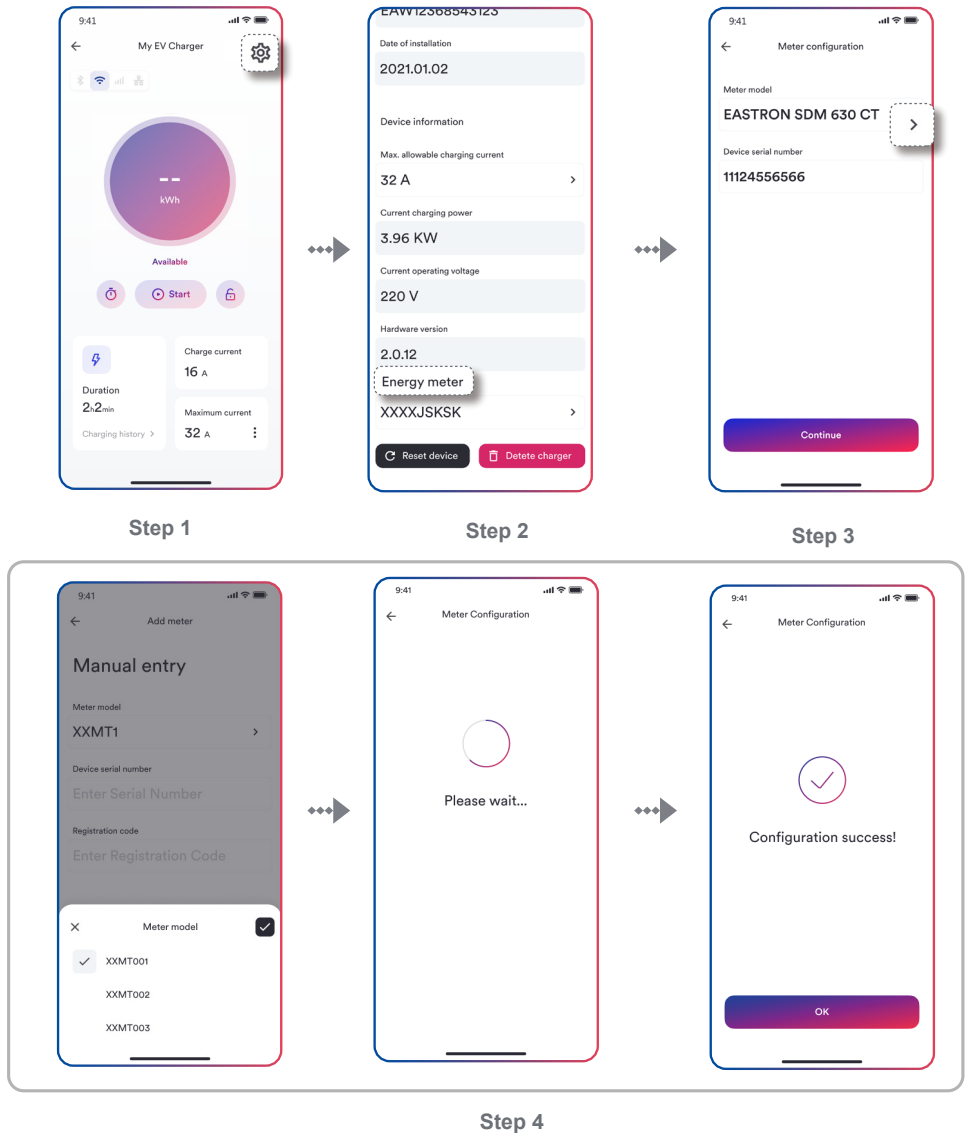


Figure 47. Manually to add meter

## 6.5 Dynamic Load Balancing

The dynamic load balancing offers further protection to ensure that your charging does not overload your domestic electrical system, it is useful for those with a limited grid supply that may trip under high loads.

In order to enable dynamic load balancing function for your EV charger, you will need to install a compatible energy meter.

**Step 1.** Click “Smart function”.

**Step 2.** Click “Dynamic Load Balancing”.

**Step 3.** Enter the “Maximum system current” and Click “Save”.

If the energy meter is not added or is not a compatible energy meter, the message will show: The specified meter is not installed. This function cannot be used. Click “Install” to bind the meter.

For details, please refer to Figure 48.

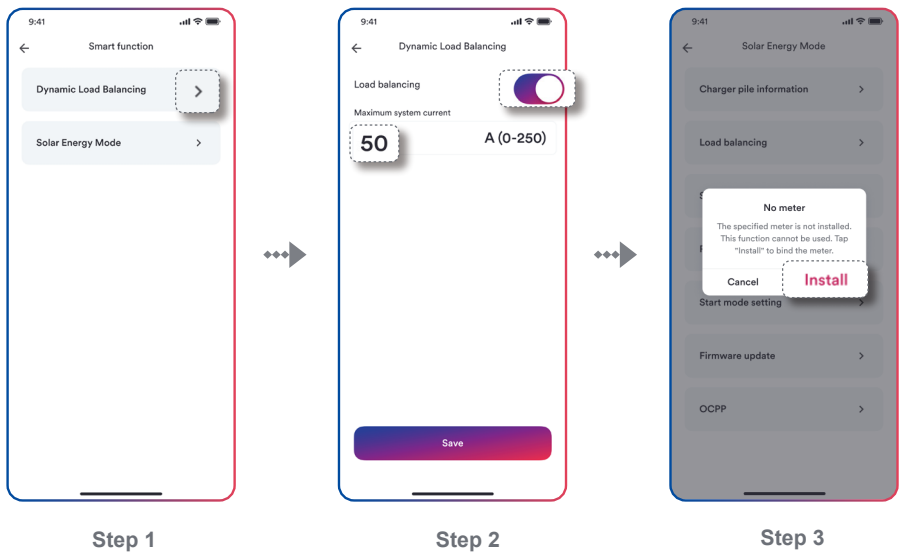


Figure 48. Dynamic Load Balancing

## 6.6 Solar Energy Mode

Solar Energy mode allows you to use the photovoltaic generated energy to charge your electric vehicle in a sustainable and eco friendly way. It offers three different charging modes: Eco mode, boost ECO mode and Solar PV mode.

Eco mode/Boost Eco mode: Unused surplus green energy will be detected and combined with grid power to charge vehicle.

Solar PV mode: Uses 100% solar energy to charge vehicle.

In order to enable solar energy mode for your EV charger, a compatible energy meter is required.

**Step 1.** Click “Solar Energy Mode”.

**Step 2.** Enable “Solar Energy Mode”.

**Step 3.** Click “Eco mode” or “Solar PV mode” or “Boost Eco Mode” and Click “Save”.

For details, please refer to Figure 49.

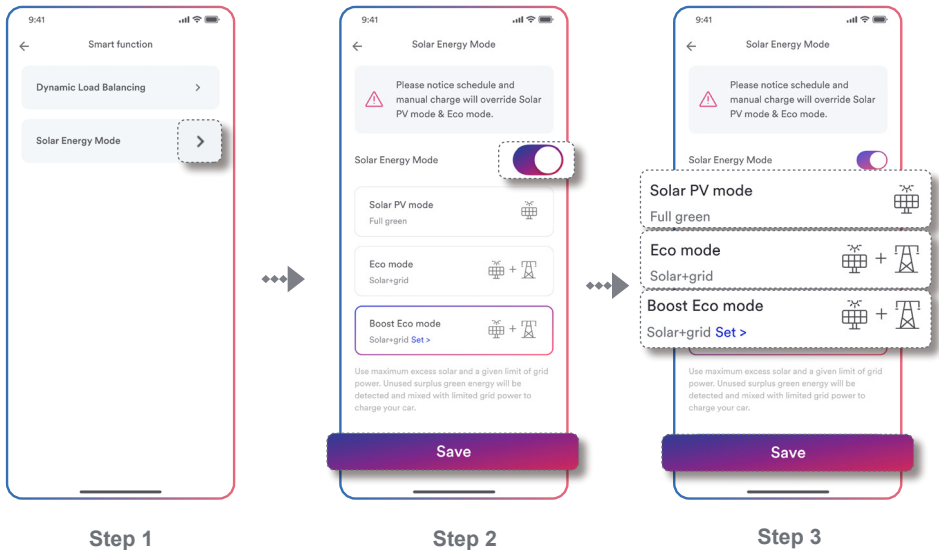


Figure 49. Solar Energy Mode



Please note that schedule and manual charge will override Solar PV mode & Eco mode if Solar Energy Mode is enabled.

Please set the solar inverter mode to “export” to the grid when there is surplus of green energy within the home power system.

Please note that the solar energy mode may discharge your battery storage system.

## 6.7 RFID card management

To add a RFID card simply swipe the card in front of the RFID area on the EV charger and it will automatically add itself to the RFID card management screen.

**Step 1.** Click “RFID card management” and you will see authorized cards.

**Step 2.** By clicking on the authorisation card (or click on the icon in the top right hand corner), you can see the charge amount, charge duration and charge time for each RFID card.

For details, Please refer to Figure 50.

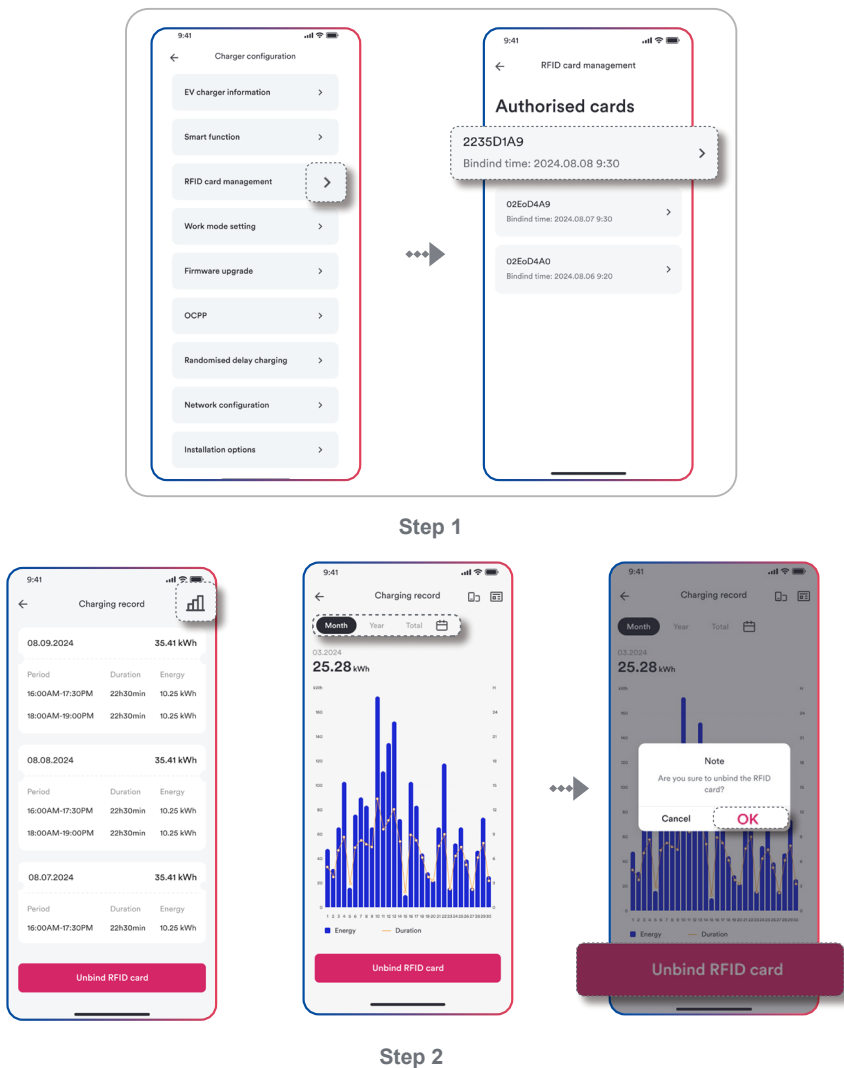


Figure 50. RFID card management



- Do not connect your charging plug to your EV when your RFID card is activating.
- Currently, the recording of electricity consumption per card is only available when the EV charger is connected to the network.
- To delete RFID cards from the RFID management screen simply tap unbind icon and confirm the remove of the card.

## 6.8 Work mode setting

**Step 1.** Click “Work mode setting”.

**Step 2.** Enable “Plug and play” mode.

Plug and play mode: This mode allows users to charge an EV simply by connecting the charger to the EV without the need of the App or a registered RFID card.

For details, please refer to Figure 51.

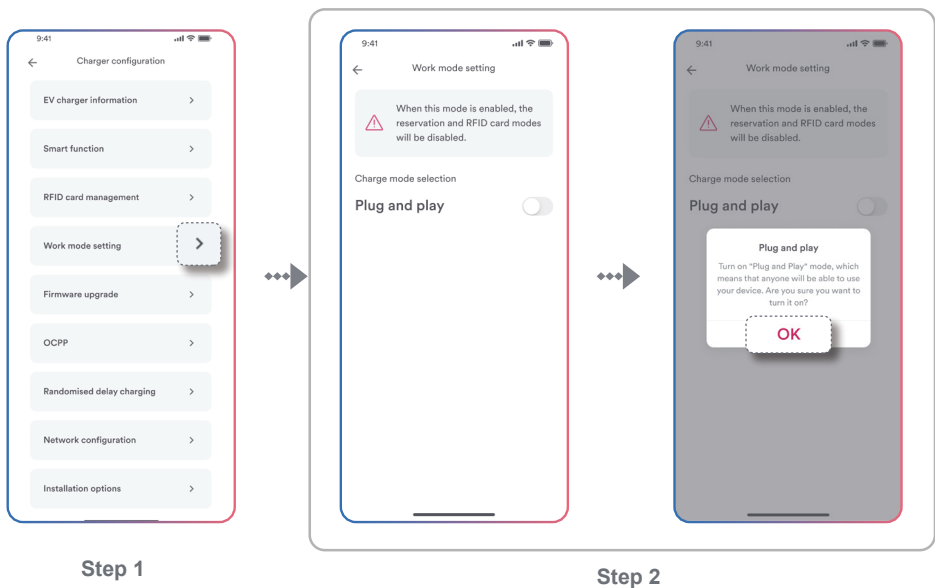


Figure 51. Work mode setting



Please note that after the Plug and play mode is turned on, the scheduled charging and RFID card modes will not be enabled.

## 6.9 Firmware update

### Notice

Please do not interrupt the network connection or power off the EV charger during the upgrade process.

### 6.9.1 Local firmware upgrade - Bluetooth

If you want to upgrade the firmware of the EV charger, as shown in Figure 52:

**Step1.** Save the firmware to your smart phone, Click the update button to find the firmware in your smart phone.

**Step2.** Wait for the uploading and keep the power during the upgrade process, and the whole process will take about 10 minutes at least. After 10 minutes, you can check the firmware with the tool app.

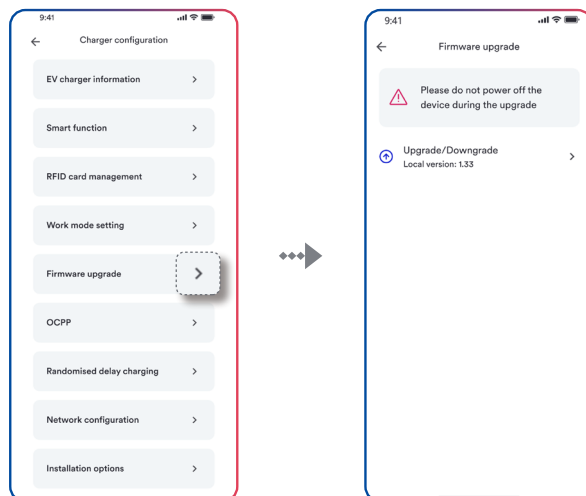


Figure 52. Local firmware upgrade - Bluetooth



## 6.9.2 Remote firmware upgrade - 4G, Wi-Fi, Ethernet

If you want to upgrade the firmware of the EV charger, as shown in Figure 53:

**Step1.** Click “Firmware update”.

**Step2.** If the latest version exists, click“Upgrade”.

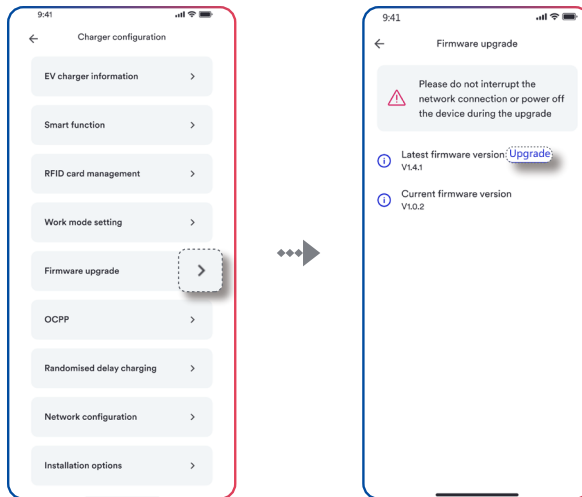


Figure 53. Remote firmware upgrade - 4G, Wi-Fi, Ethernet

## 6.10 Randomised delay charging

**Step 1.** Click “Randomised delay charging”.

**Step 2.** Enable “Randomized delay charging”.

**Step 3.** Enter delay time, Click “Save” and will activate this mode.

If you are UK user, after the EV charger is successfully set up, the randomised delay setting will be enabled by default based on UK regulation, user can manually override the setting after the initial set up.

For details, please refer to Figure 54.

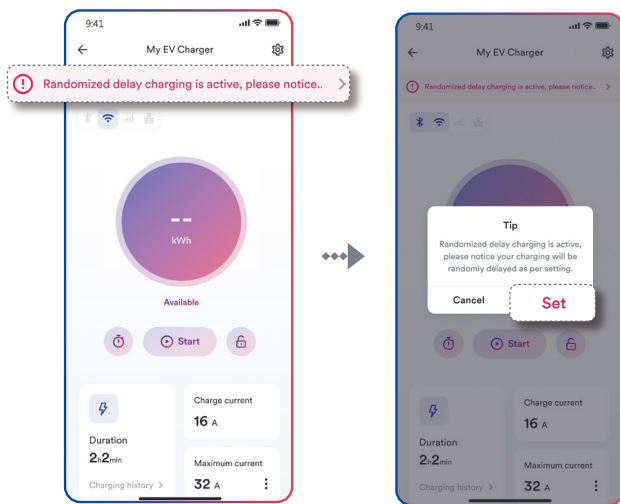
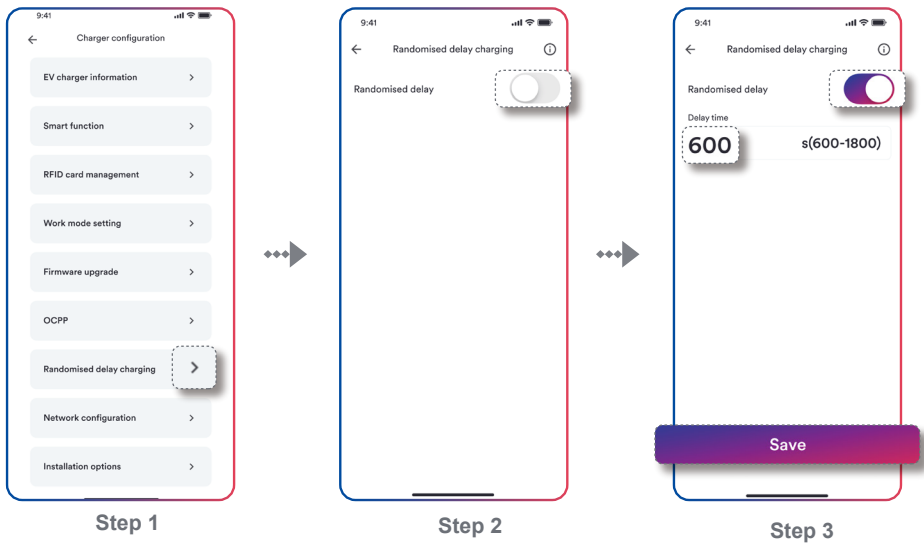


Figure 54. Randomised delay charging



This smart function means that before a charge point switches electricity load, it randomly generates a time in seconds (default up to 600 seconds, maximum up to 1800 seconds) and will not switch until this time has passed, it will help reduce the risk of potential grid stability issues where multiple chargepoints switch on or off at the same time.

## 6.11 Network configuration

**Step 1.** Click the “Network Configuration” entry.

**Step 2.** Choose and enable the network type to be used (4G, Wi-Fi, Ethernet), then click the “Save” button to validate the network configuration.

For details, please refer to Figure 55.

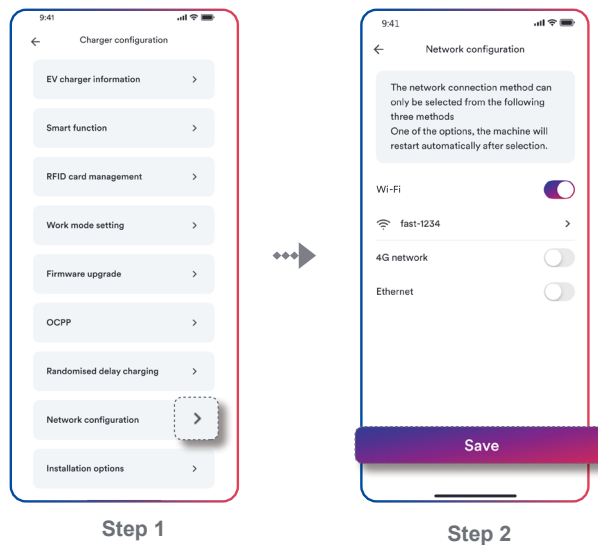


Figure 55. Network Configuration

### Notice

- Only one network mode switch can be selected here (two or more cannot be turned on at the same time).
- Enter this entry, if you have previously configured Wi-Fi or 4G, the corresponding switch will show on the state.
- After changing the network mode, the EV charger will restart.

## Wi-Fi configuration introduction

Here you can configure the Wi-Fi network or change the current Wi-Fi network.

**Step 1.** Enable Wi-Fi.

**Step 2.** You can configure the Wi-Fi network or change the network by tapping the list below the switch.

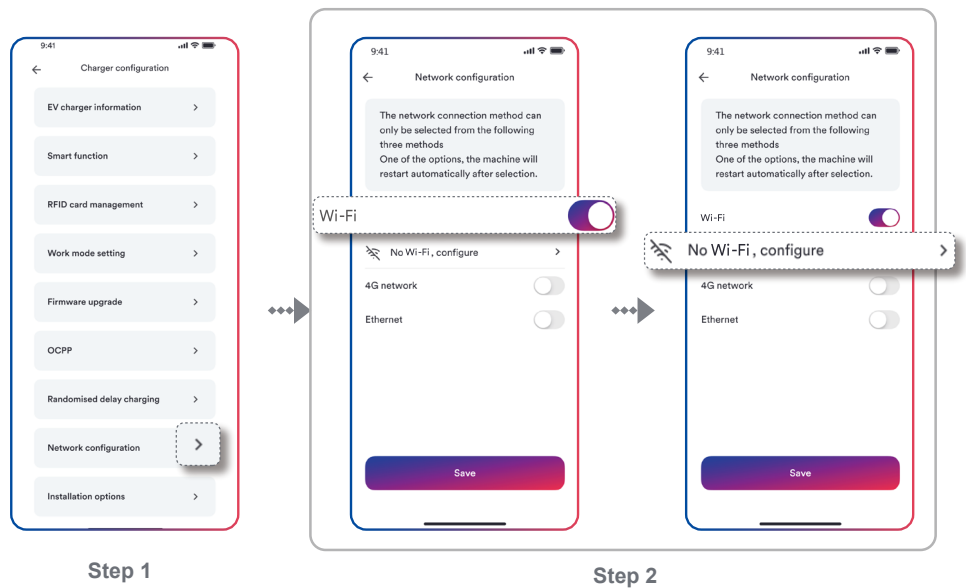
**Step 3.** Select network from the list you want to configure or choose a different Wi-Fi network name and enter the password, then Click “Continue”.

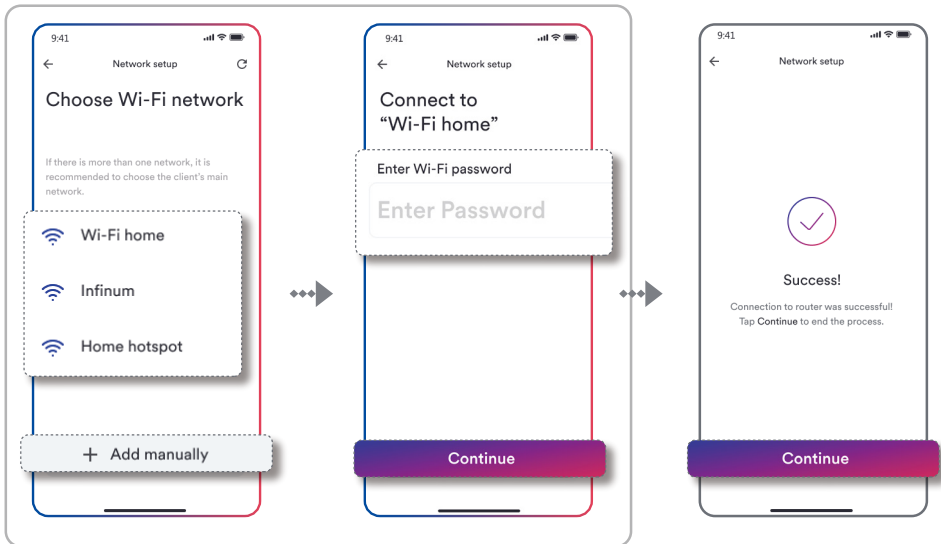
\*If your Wi-Fi network does not appear in the search list, you can manually search to configure it by entering the Wi-Fi name (SSID) and password.

**Step 4.** After completing the above steps, the system will be automatically configured. After feedback on the “Success” screen, click “Continue” to end the process.

**Step 5.** At this point, return to the higher-level page and click the “Save” button to make the network configuration effective.

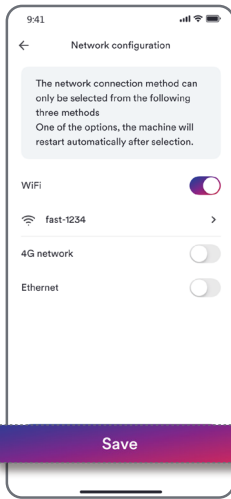
For details, please refer to Figure 56.





Step 3

Step 4



Step 5

Figure 56. Wi-Fi configuration

## 4G configuration introduction

Please ensure your EV Charger supports 4G function.

**Step 1.** Enable 4G.

**Step 2.** You can configure the 4G network or change the network by tapping the list below the switch.

**Step 3.** Enter the appropriate information (APN address, username and password) and tap “Save”.

At this point, you will return to the superior page and click the “Save” button to take effect the network configuration.

For details, please refer to Figure 57.

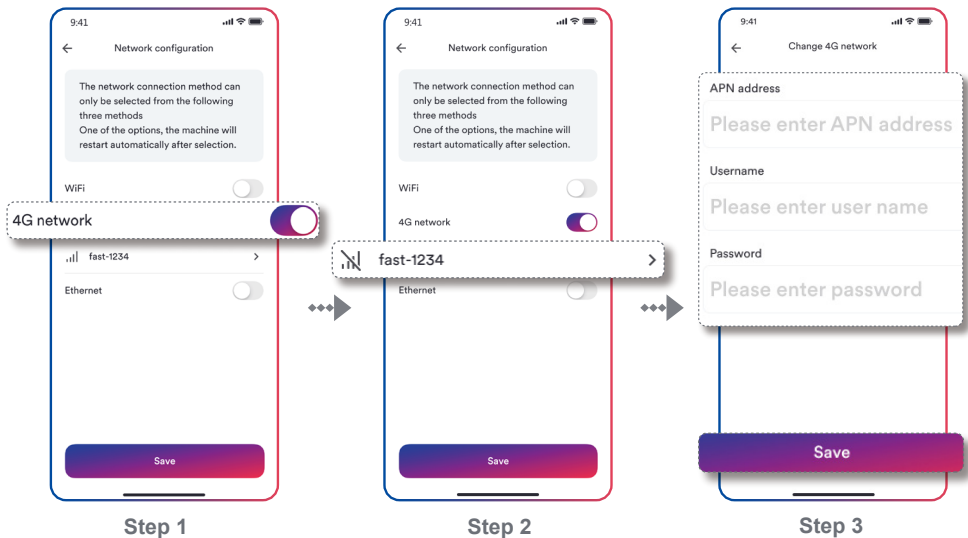


Figure 57. 4G configuration

## Ethernet configuration introduction

**Step 1.** Enable Ethernet, then click the "Save" button to validate the network configuration.

**Step 2.** Connect the network cable to the EV charger and router. The configuration is complete after the EV charger restarts.

For details, please refer to Figure 58.

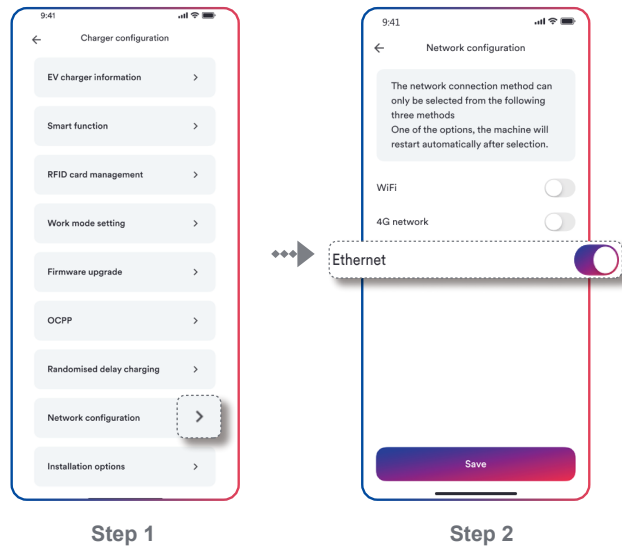


Figure 58. Ethernet configuration



Only one of network option can be selected each time, when switching from one network mode to another, the EV charger will restart automatically.

**Step1.** Choose the Plant to be shared.

**Step2.** Click the Share icon in the upper right corner.

**Step3.** Enter the account you want to share, then click “OK”.

**Step4.** Click “OK”, Plant is successfully shared!

For details, please refer to Figure 59.

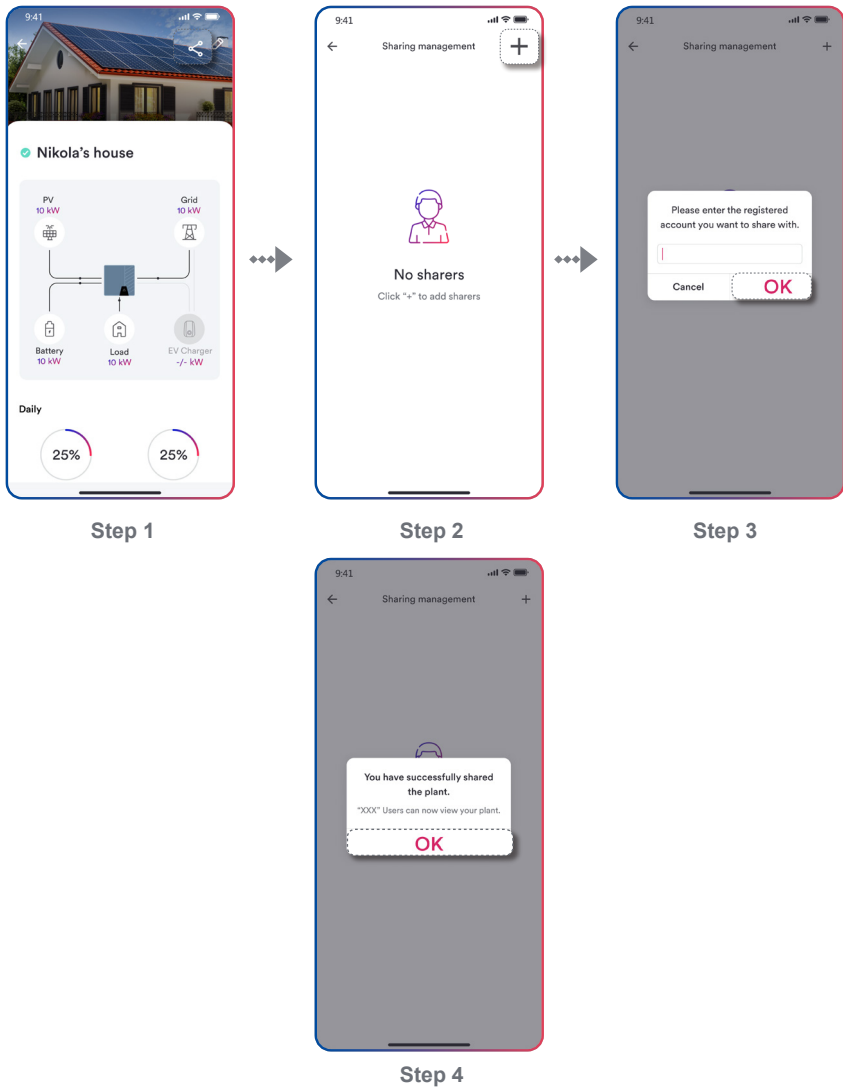


Figure 59. Share Plant



If there is a faulty device under your account ID, you can view the fault in the two dimensions of “current” and “history” through the “message” column in the upper right corner of the home page. Click on the specified fault to view the details and get a solution.

For details, please refer to Figure 60.

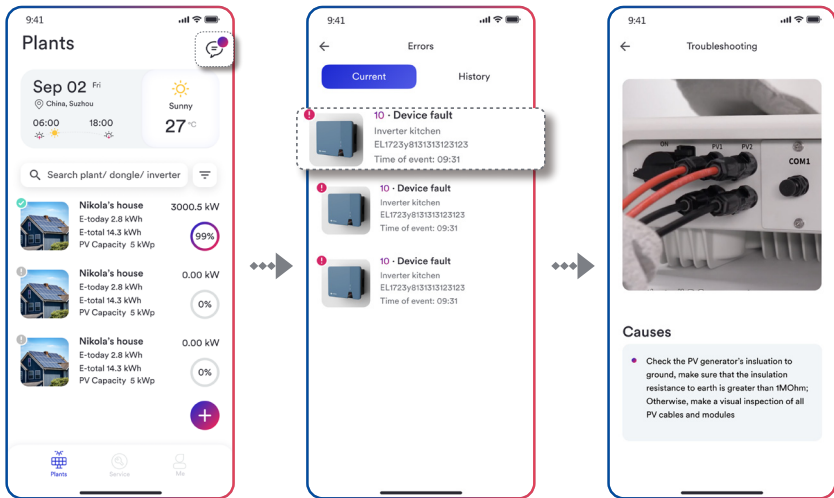


Figure 60. Troubleshooting

If you encounter technical issues related to our product, please contact our regional service department within working hours.

EMEA

Service email: [service.EMEA@solplanet.net](mailto:service.EMEA@solplanet.net)

APAC

Service email: [service.APAC@solplanet.net](mailto:service.APAC@solplanet.net)

LATAM

Service email: [service.LATAM@solplanet.net](mailto:service.LATAM@solplanet.net)

AISWEI Technology Co., Ltd

Hotline: +86 400 801 9996

Add.: Room 904-905, No. 757 Mengzi Road, Huangpu District, Shanghai 200023

<https://solplanet.net/contact-us/>



Solplanet App