

**1. About this Document**

This document describes the activities related to the creation of a PV plant, set-up and commissioning of a Solplanet inverter and connecting the Solplanet inverter to a WiFi network.

The contents of this quick guide apply to the following models:

- ASWx000S-S
- ASWx000-S
- ASWx000-T
- ASWxxK-LT
- ASWxxK-LT-G2
- ASW TLCx000

The firmware of the Solplanet WiFi stick should be 19B01-0021R or greater. Please contact the Solplanet service team in your region if in doubt.

**2. Items Required**

- Solplanet inverter with a WiFi stick
- WiFi stick with firmware greater than 19B01-0021R
- iOS or Android based mobile device
- Ai-energy app
- Ai-energy password for inverter configuration, please contact our local service team see section 9.

**3. Before Using the App**

Please ensure the following has been completed before using this quick guide:

- A Solplanet inverter installed as per the Solplanet guidelines
- A Solplanet WiFi stick has been connected to the inverter
- The inverter has been connected to a string of solar panels of the appropriate voltage or to a DC power source
- The inverter DC switch is in the “ON” position
- Ensure the WiFi stick’s green LED is solid ON and the blue LED is OFF

If the blue LED is solid ON before your first attempt to begin, the WiFi stick may have already connected to a WiFi network. Please contact the Solplanet service team in your region if this is the case.

**4. WiFi Stick LED Indicators**

There are two LED indicators on the WiFi stick, the state of each LED indicator is defined in the table below:

	Solid OFF	Solid ON
Green LED	<ul style="list-style-type: none"> <li>• WiFi stick is OFF</li> </ul>	<ul style="list-style-type: none"> <li>• WiFi stick is ON</li> </ul>
Blue LED	<ul style="list-style-type: none"> <li>• Not connected to WiFi</li> <li>• ASW-XXXX access point is ON</li> </ul>	<ul style="list-style-type: none"> <li>• Connected to WiFi</li> <li>• ASW-XXXX access point is OFF</li> </ul>

**5. App Download**

To download the Ai-energy app, please scan the appropriate QR code below.

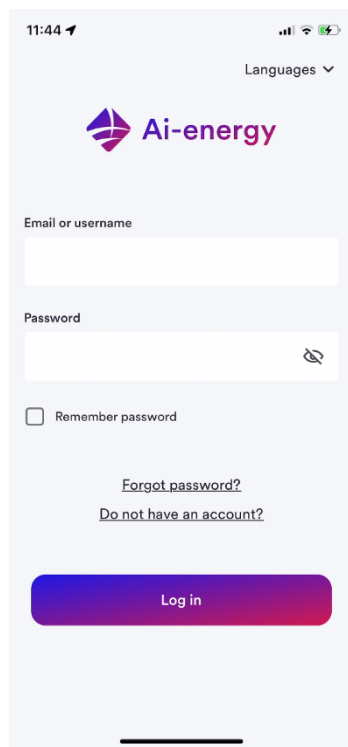


iOS/Android

**6. Account Registration**

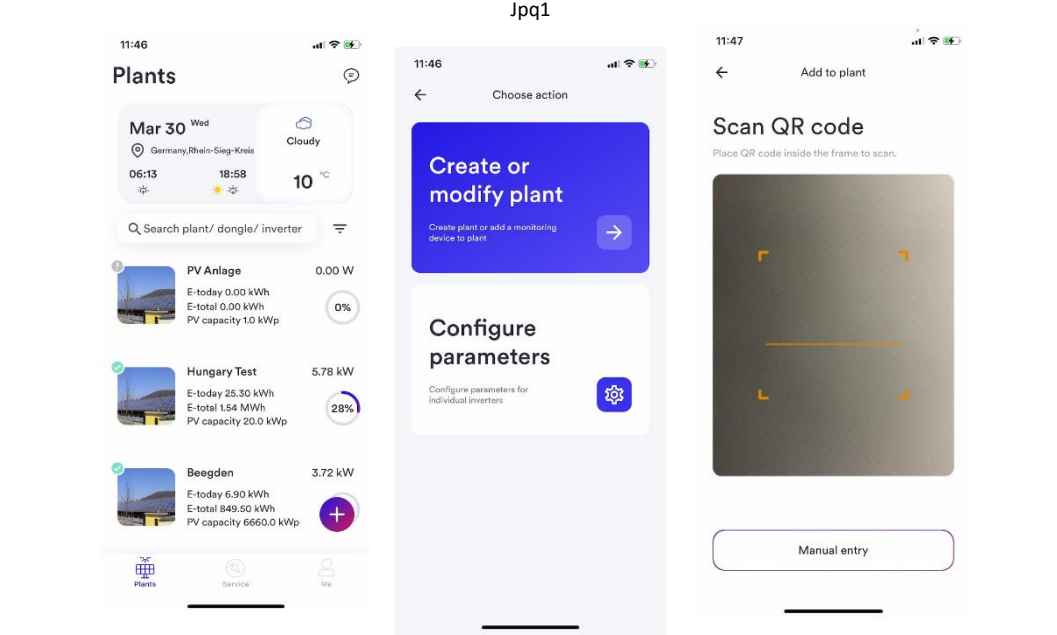
An account can be created in the following ways:

- Tapping on “Do not have an account?” on the login screen of the app and following the prompts
- Registration is possible using either an email or a registered cellular phone number



Log into the App after the account has been registered.

**7. Create PV Plant**



**1. Tap “+”**

**2. Tap “Create or modify a Plant”**

**3. Scan WiFi stick QR code or manually enter the serial number and the registration code**

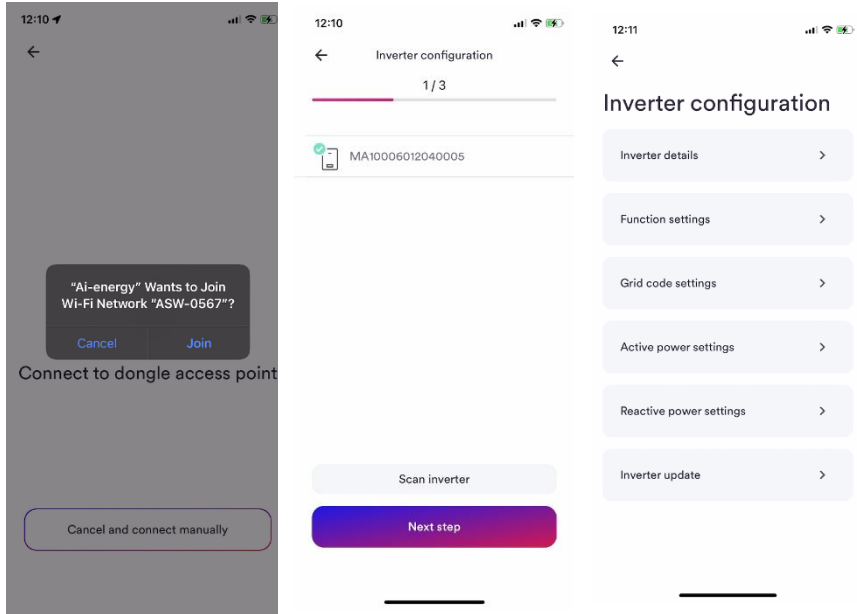
**4. Tap “+ Create new plant”**

**5. Enter PV plant information in all fields marked with a red asterisk and tap “Create”**

**6. Optional: turn on the App location services**

**7. Tap “Add dongle to this plant”**

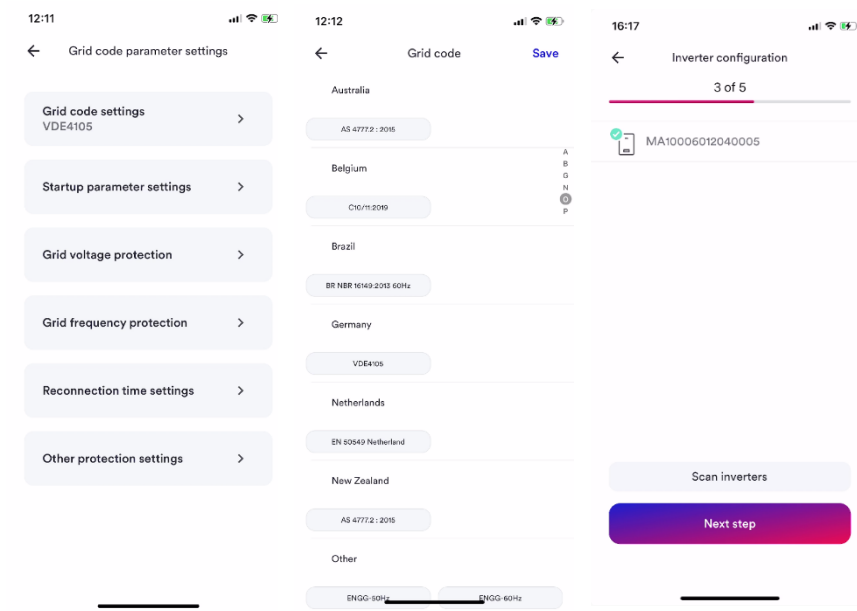
## 8. Inverter Set-up



8. Connect to ASW-XXXX access point by tapping "Join"

9. Tap the inverter serial number that matches your inverter  
10. Enter password – contact service team

11. Tap "Grid" code settings"

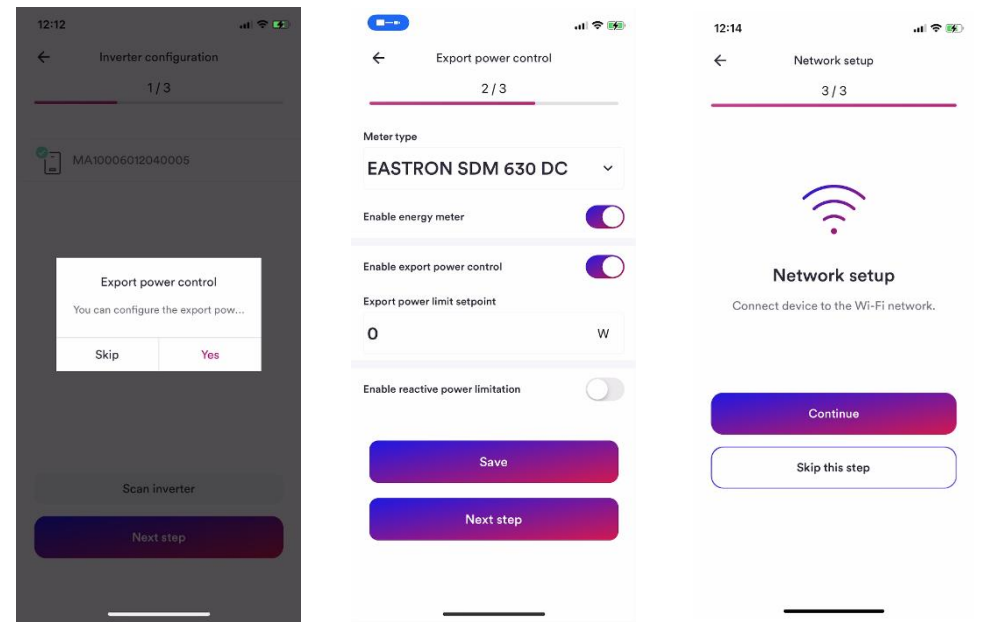


12. Tap "Grid code settings"

13. Select the correct grid code and tap "Save"  
14. Tap return arrow three times to return to inverter list

15. Tap "Next step"

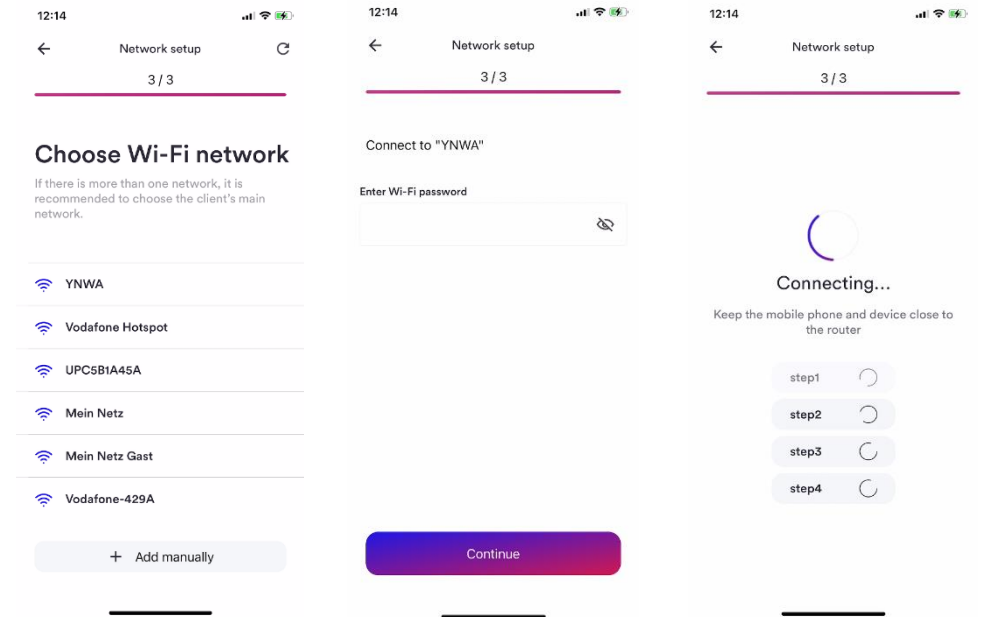
4



16. To set up export power limitation or consumption monitoring tap "Yes" otherwise tap "Skip" and proceed to step 21

17. Select meter type  
18. Enable energy meter function  
19. Enter "Export Power Limit Setpoint" in watts (W)  
20. Tap "Save"  
21. Tap "Next step"

22. Tap "Continue"

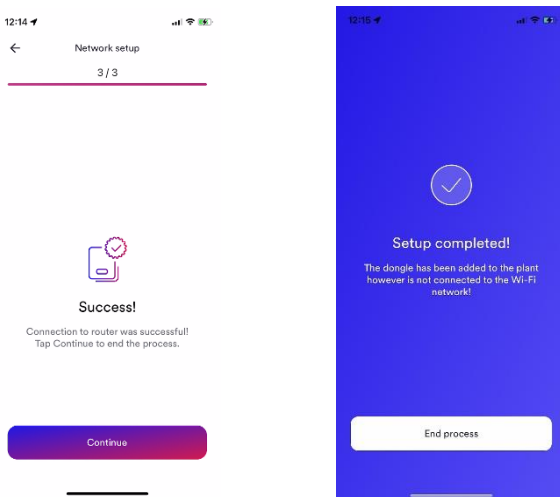


23. Select WiFi network from list

24. Enter WiFi password and tap "continue"

25. Connect mobile device WiFi to network when asked by tapping "Join", please wait a few minutes.

5



26. "Success!" will be shown when the WiFi connection has been completed. The blue LED on the WiFi stick should be solid ON

27. Setup is now completed, tap "End process" and the PV plant will now be shown on the PV plant list, a tap on the "refresh" icon in the top right-hand corner may be necessary

## 9. Contact

If you have any technical problems with our products, please contact our service. Provide the following information to assist in providing you with the necessary assistance:

- Inverter device type
- Inverter serial number
- Type and number of connected PV modules
- Error code
- Mounting location
- Warranty card
- Mobile device type

SOLPLANET INTERNATIONAL  
service@solplanet.net

SOLPLANET AUSTRALIA  
Service: +61 390 988 674  
service.au@solplanet.net

SOLPLANET THE NETHERLANDS  
Service: +31 20 800 4844  
service.eu@solplanet.net

SOLPLANET POLAND  
Service: +48 13 4926 109  
service.pl@solplanet.net

SOLPLANET HUNGARY  
Service: +36 465 00 384  
service.hu@solplanet.net

SOLPLANET TURKEY  
Service: +90 850 346 00 24  
[service.tr@solplanet.net](mailto:service.tr@solplanet.net)

SOLPLANET BRAZIL  
Support: +55 51 99765 3389  
service.br@solplanet.net

AISWEI CHINA  
Service: +86 400 801 9996  
[service.china@aiswei-tech.com](mailto:service.china@aiswei-tech.com)

SOLPLANET SPAIN  
Service: +31 20 800 4844  
service.eu@solplanet.net

SOLPLANET GERMANY  
Service: +31 20 800 4844  
service.eu@solplanet.net

SOLPLANET KOREA  
Service: +82 31 422 8110  
service@solplanet.com

SOLPLANET SOUTH AFRICA  
service@solplanet.net